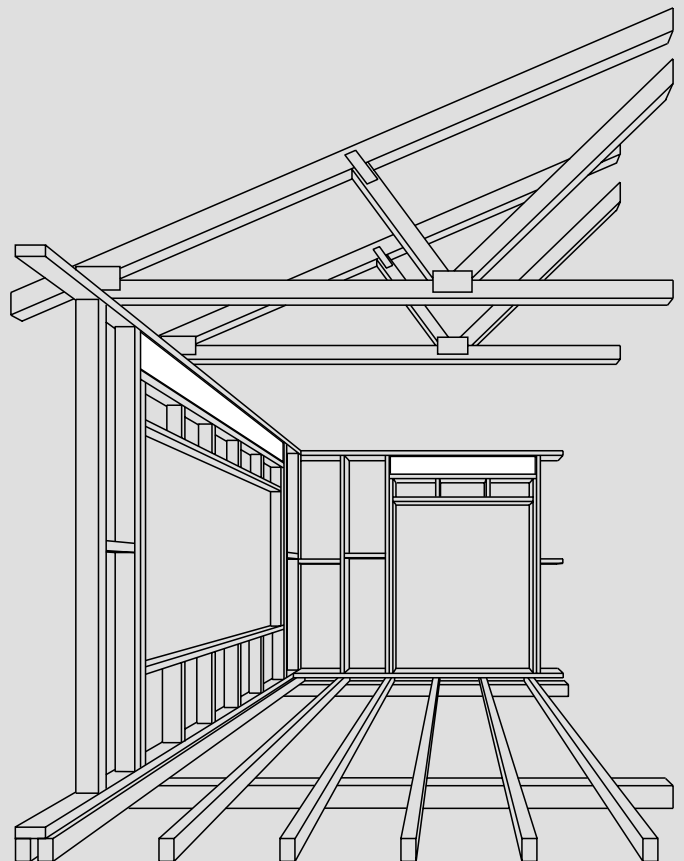
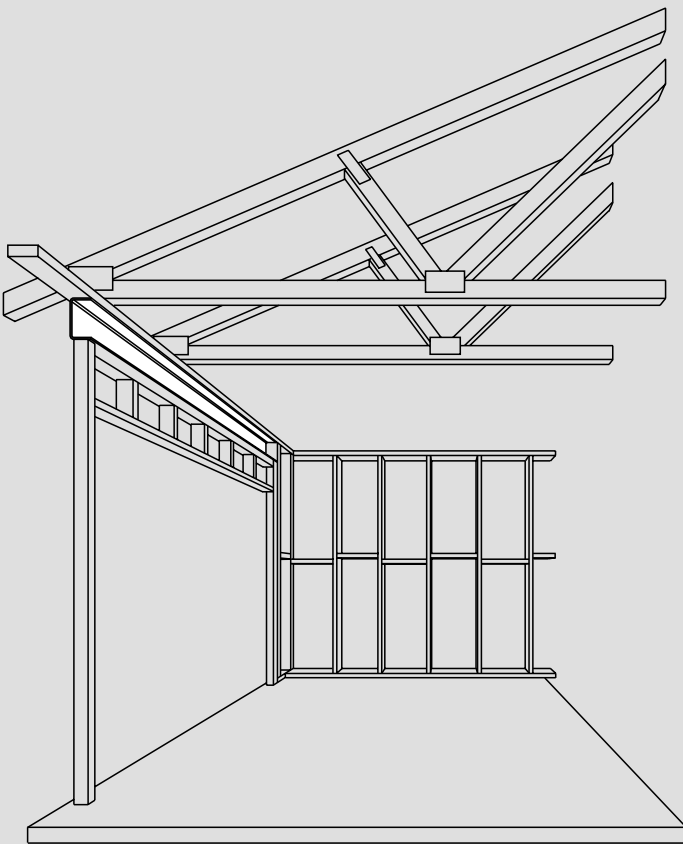


W28N to W41N

DuraGal[®] Domestic Construction Manual

Volume 2: DuraGal Channels and RHS as Lintels (Garage Beams, Window Heads)



DuraGal[®] DOMESTIC CONSTRUCTION MANUAL

- Volume 1: Roof Beams - W28N to W41N**
(Rafters, Roof Beams, Strutting Beams, Roof Battens, Ceiling Joists)
- Volume 2: Lintels - W28N to W41N**
(Garage Beams, Window Heads)
- Volume 3: Floor Beams - W28N to W41N**
(Bearers)
- Volume 4: Roof Beams - W50N to W70C**
(Rafters, Roof Beams, Strutting Beams, Roof Battens, Ceiling Joists)
- Volume 5: Lintels - W50N to W70C**
(Garage Beams, Window Heads)
- Volume 6: Floor Beams - W50N to W70C**
(Bearers)

DISCLAIMER

This publication has been prepared by OneSteel Market Mills (OneSteel Trading Limited ABN 50 007 519 646). All reasonable endeavours have been made to ensure that the information contained in the Manual is accurate. However, all users of the Manual are advised to check the information contained in this Manual to ensure its accuracy and suitability for any particular application and rely on their own judgement before use of the information. Except for non-excludable laws, OneSteel Trading Limited excludes all liability for claims or actions for any loss, damage or consequential damages (which include exclusion for negligence or breach of contract) as a result of the information (including errors or omissions) contained in this Manual or use of such information. All drawings and sketches are representative only of typical applications and should not be relied upon.

This brochure is not an offer to trade and shall not form any part of any trading terms in any transaction. Issued November 2000.

©Copyright 2000. OneSteel Trading Limited ABN 50 007 519 646 - Registered Trademark: DuraGal[®]

FOREWORD

This limited edition of the *DuraGal*[®] Domestic Construction Manual has been prepared by OneSteel Market Mills based on the requirements of relevant Standards Australia Specifications and in house testing.

The relevant design assumptions are listed in the front of each table. However, where loading and assembly information is known for a particular construction, refined application tables can be prepared based on prototype testing.

It is our intention to work through a series of application tables with these documents as a base and we look forward to being able to issue these application tables over the next few years.

Before selecting a member, reference should be made to the design assumptions to confirm the suitability of the tables for the intended applications.

NOTE: These tables do not take into account product availability from your steel distributor.

Please ensure that you check on product availability before you finalise the design.

It is strongly recommended that DuraGal products be specified for construction when any of the design information in these Manuals is used, as the calculations including product tolerances, mechanical properties and chemical composition have been validated by structural testing using only DuraGal products. To ensure that the designers intentions are met it is strongly recommended that a note to this effect is included on any design information.

LETTER OF CERTIFICATION



♦ STRUCTURAL ♦ CIVIL ♦ HOUSING ♦ FORENSIC ♦

MORGAN CONSULTING
ENGINEERS PTY LTD
A.C.N. 009 859 081

1 GREAT GEORGE STREET
PADDINGTON QLD 4064

PHONE: (07) 3369 8411

FACSIMILE: (07) 3369 1893

EMAIL: mail@morgance.com.au

Friday, 24 November 2000

Onesteel Market Mills
PO Box 156
NEWCASTLE NSW 2300

Dear Sir,

RE: Structural Engineers Certification
DuraGal Domestic Construction Manual

We hereby certify that we have checked the structural aspects of the span tables in the DuraGal Domestic Construction Manual Volumes 1, 2 and 3 dated November 2000.

We certify that members designed using these tables are structurally adequate and in accordance with the Building Code of Australia and relevant SAA Codes of Practice.

Yours Faithfully,
MORGAN CONSULTING ENGINEERS PTY LTD

Craig Langton CPEng



CONTENTS

Page

Foreword

Letter of Certification

DuraGal® Product Specifications

2

Span Tables Design Data

3

DuraGal Channels and RHS as Lintels

4

How to use the Tables

6

Example

8

TABLES

Lintel Supporting **ROOF** only

9

ROOF - Masonry Tiles and Ceiling

10

ROOF - Steel Sheeting and Ceiling

11

Lintel Supporting **ROOF** only - with Girder Truss

13

ROOF - Masonry Tiles and Ceiling

14

ROOF - Steel Sheeting and Ceiling

15

Lintel Supporting **ROOF** and **FLOOR** loads

16

FLOOR - Timber

ROOF - Masonry Tiles and Ceiling - Pitched Roof

18

FLOOR - Timber

ROOF - Masonry Tiles and Ceiling - Trussed Roof

19

FLOOR - Timber

ROOF - Steel Sheeting and Ceiling - Pitched Roof

20

FLOOR - Timber

ROOF - Steel Sheeting and Ceiling - Trussed Roof

21

FLOOR - Concrete

ROOF - Masonry Tiles and Ceiling - Pitched Roof

22

FLOOR - Concrete

ROOF - Masonry Tiles and Ceiling - Trussed Roof

23

FLOOR - Concrete

ROOF - Steel Sheeting and Ceiling - Pitched Roof

24

FLOOR - Concrete

ROOF - Steel Sheeting and Ceiling - Trussed Roof

25

DuraGal® PRODUCT SPECIFICATIONS

SURFACE FINISH AND CORROSION PROTECTION

A minimum average 100g/m² coating of zinc (about 14µm) is applied to *DuraGal* sections (external surface for RHS/SHS and all surfaces for channels) by In-line, Hot-dip Galvanizing to a mechanically (shot blasted) and chemically cleaned bright metal surface equivalent to AS 1627.4 Class 3. The zinc is then treated with a surface conversion coating to improve the adhesion of paint or powder coatings. *DuraGal* Profiles are further protected with a clear coating typically 8µm thick.

In many corrosive environments these systems may not require any additional surface treatment. In harsh environments additional top coats may need to be applied. For advice on painting systems for a wide range of environments refer to the “*DuraGal* Easy Painting & Corrosion Protection Guide”.

WELDING PERFORMANCE

DuraGal sections are made from low carbon structural steel, so they are readily weldable. The zinc coating thickness is carefully controlled to ensure that structurally sound welds can be fabricated using standard welding practices. The “*DuraGal* Products Easy Welding Guide” provides guidelines for welding *DuraGal* products.

GRADE

DuraGal sections are manufactured by a unique cold forming process which ensures the *DuraGal* Channels with thicknesses less than or equal to 6mm and all *DuraGal* Rectangular and Square Hollow Sections (RHS/SHS) comply with the requirements of Grade C450L0. *DuraGal* Channels with thickness greater than 6mm comply with the requirements of Grade C400L0.

DESIGNATION

Typical designations for *DuraGal* Channels, RHS and SHS are:

For <i>DuraGal</i> Channel	300 x 90 x 8.0	CC <i>DuraGal</i>
For <i>DuraGal</i> Channel back to back	2 / 300 x 90 x 8.0	CC <i>DuraGal</i>
For <i>DuraGal</i> RHS	150 x 50 x 4.0	RHS <i>DuraGal</i>
For <i>DuraGal</i> SHS	100 x 100 x 4.0	RHS <i>DuraGal</i>

LENGTH RANGE

DuraGal is stocked by distributors in the following lengths.

Section	Size	Standard Length (m)	Non-Standard Lengths* (m)
Channel	75 x 40 to 125 x 65	9.0	6.0 to 12.0
	150 x 75 to 300 x 90	12.0	6.0 to 12.0
RHS	50 x 20 to 150 x 50	8.0	4.5 to 13.0
SHS	20 x 20 to 30 x 30	6.5	4.5 to 8.0
	35 x 35 to 100 x 100	8.0	4.5 to 13.0

* Non-standard Lengths - Minimum order quantities and/or price extras may apply.

SPAN TABLES DESIGN DATA

SCOPE

This volume of the *DuraGal*® Domestic Construction Manual covers the design of *DuraGal* Channel and RHS Lintels which conform to wind classifications of up to category N3 (W41N).

The tables in this volume cover the design of *DuraGal* Channels and RHS Lintels supporting house framing (**not carrying masonry walls**). The tables have been broadly divided into two sections: Lintels supporting ROOF loads only and Lintels supporting ROOF and FLOOR loads.

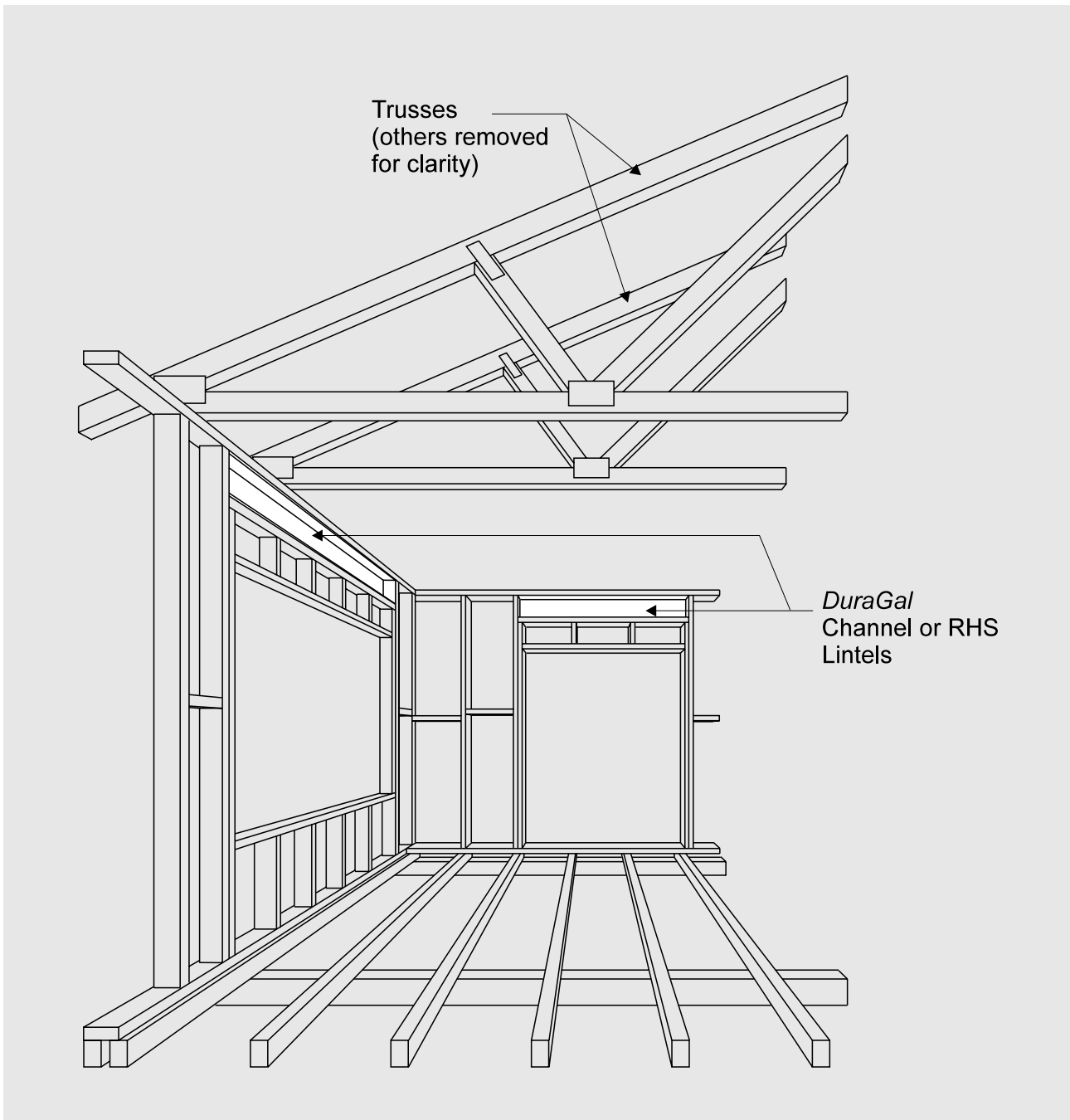
DESIGN ASSUMPTIONS

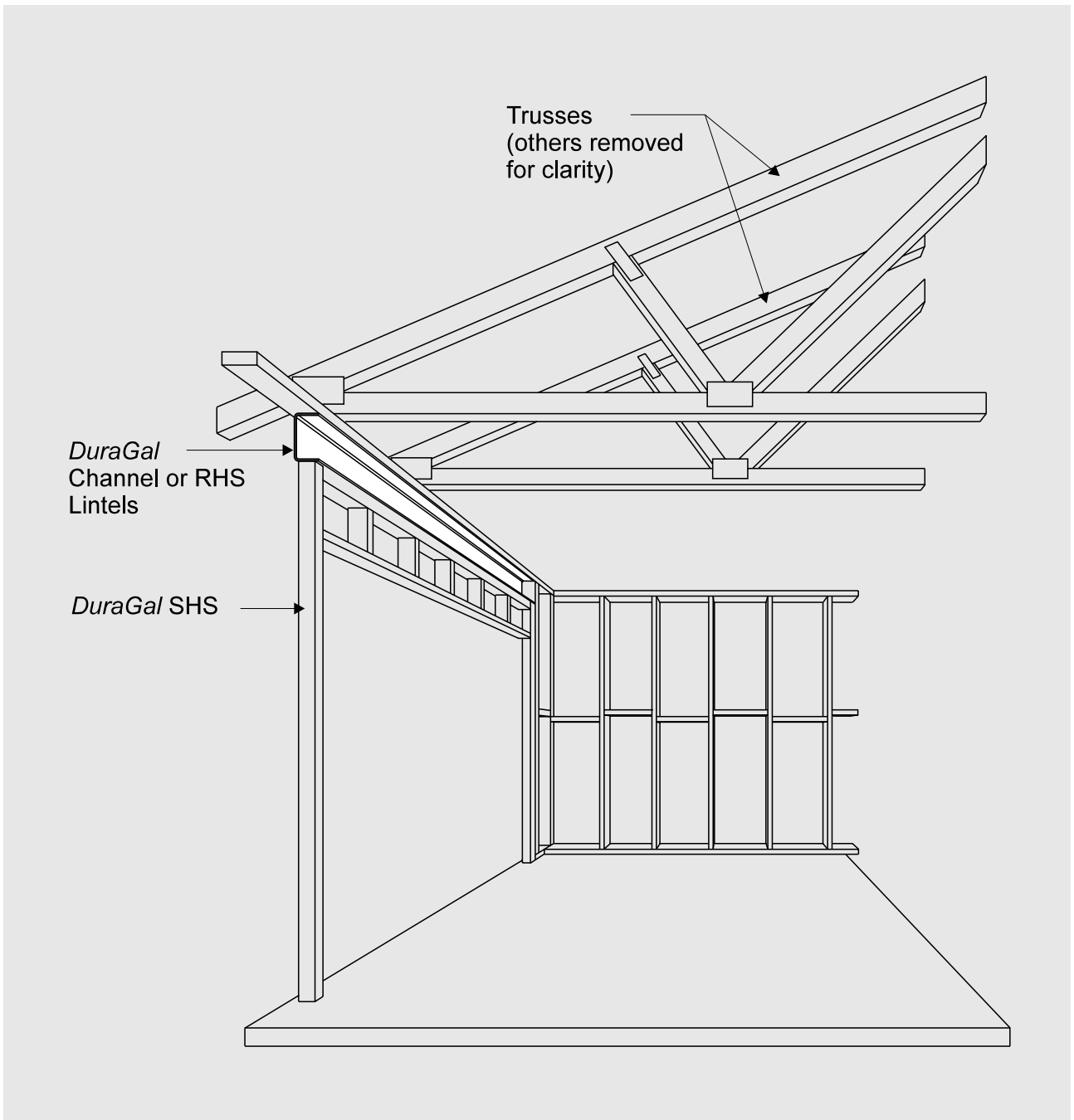
The design assumptions used to generate these tables are as follows:

- *DuraGal* Channel Lintels are designed in accordance with AS/NZS 4600 and *DuraGal* RHS Lintels in accordance with AS 4100.
- All Lintels are assumed to be restrained against lateral movement and twist along their lengths in accordance with AS/NZS 4600 or AS 4100.
- All applied loads are assumed to be uniformly distributed except for Point Live Load requirements listed before each set of tables.
- The loads applied and the deflection limits for each set of tables is shown before the tables.
- All loads are static and applied vertically.
- Minimum end support bearing for Lintels is assumed to be 70mm.
- In accordance with Section 2.4 of AS 3623: Domestic metal framing, the only wind considered in the generation of these tables is wind uplift.
- All Lintels are assumed to be part of an enclosed building.
- The wind pressure coefficients for enclosed buildings are taken as:
External pressure coefficient, $C_{p,e} = -0.9$
Internal pressure coefficient, $C_{p,i} = +0.2$ (for non-cyclonic areas)

DURAGAL[®] CHANNEL AND RHS AS LINTELS

Examples of the use of *DuraGal* members as lintels not carrying masonry are shown in this section. The diagrams show *DuraGal* channel used as Window Head and as a Garage Beam.





HOW TO USE THE TABLES

Step 1

Find out if the Lintel is carrying ROOF loads only or ROOF & FLOOR loads. _____

Step 2

Establish the type of roofing material (Masonry tiles & Ceiling or Steel Sheeting & Ceiling) _____

Step 3

Check that the Wind classification is equal to or below W41N.

If Lintel is carrying ROOF loads only go to Step 7

Step 4

Find the type of flooring material used (Timber or Concrete) _____

Step 5

Establish if the roof is TRUSSED or PITCHED. _____

Step 6

Calculate the *Effective Roof Width* and *Effective Floor Width*. Check also the validity of the design assumptions used in the tables to work out the *Effective Lintel Spacing* for trussed and pitched roof. _____

Step 7

Work out REQUIRED *Effective Lintel Spacing* as per the diagrams provided at the start of the tables. _____

Step 8

Work out the REQUIRED span of the Lintel

Step 9

Go to the appropriate table on the basis of information from Step 1 to 8.

Step 10

Select the column under *Effective Lintel Spacing* with TABLE *Effective Lintel Spacing* equal to or larger than the REQUIRED *Effective Lintel Spacing* (worked out in Step 7).

Step 11

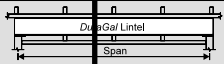
Select the section that has a MAXIMUM span equal to or larger than the REQUIRED span of Lintel which is worked out in Step 8.

Supporting ROOF Loads only

ROOF - Masonry Tiles & Ceiling

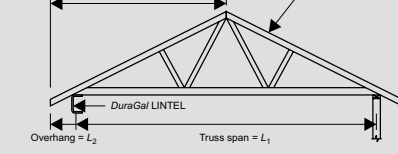
Maximum Lintel Span (mm)

SINGLE SPAN

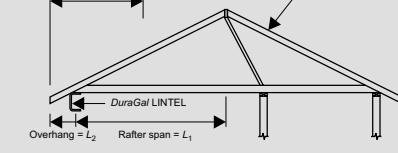


DuraGal Section RHS	Mass kg/m	Effective Lintel Spacing (mm)						
		1200	1800	2400	3000	3600	4200	4800
300x90x6,0CC	28.5	8190	7530	7070	6730	6450	6230	6040
300x90x7,0CC	25.1	7950	7300	6850	6510	6240	6020	5840
300x90x6,0CC	21.6	7650	7010	6570	6240	5980	5770	5590
250x90x6,0CC	19.2	6880	6290	5900	5600	5360	5170	5010
230x75x6,0CC	16.9	6430	5970	5500	5220	5000	4820	4670
200x75x6,0CC	15.5	5920	5410	5060	4800	4600	4430	4290
200x75x5,0CC	12.4	5620	5080	4750	4500	4310	4150	4020
180x75x5,0CC	11.6	5240	4770	4460	4230	4050	3900	3770
150x75x5,0CC	10.5	4710	4290	4010	3800	3630	3500	3390
125x75x4,0CC	7.23	3940	3580	3340	3180	3020	2910	2820
100x50x4,0CC	5.59	3350	3040	2840	2680	2520	2400	2300
75x40x4,0CC	4.25	2740	2410	2200	2040	1920	1830	1750

Effective Lintel Spacing = $L_1 / 2 + L_2$



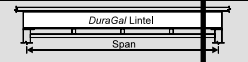
Effective Lintel Spacing = $L_1 / 2 + L_2$



FLOOR - Timber ROOF - Masonry Tiles & Ceiling - Pitched Roof*

Maximum Lintel Span (mm)

SINGLE SPAN

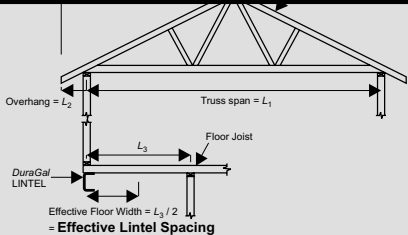


DuraGal Section RHS	Mass kg/m	Effective Lintel Spacing (mm)						
		1200	1800	2400	3000	3600	4200	4800
300x90x6,0CC	28.5	7070	6450	6040	5730	5480	5280	5110
300x90x7,0CC	25.1	6850	6240	5840	5540	5300	5100	4940
300x90x6,0CC	21.6	6570	5980	5590	5300	5070	4880	4750
250x90x6,0CC	19.2	5900	5360	5010	4750	4540	4380	4230
230x75x6,0CC	16.9	5500	5000	4670	4420	4230	4070	3940
200x75x6,0CC	15.5	5060	4600	4290	4070	3890	3750	3620
200x75x5,0CC	12.4	4750	4310	4020	3810	3640	3420	3300
180x75x5,0CC	11.6	4460	4050	3770	3570	3420	3290	3010
150x75x5,0CC	10.5	4010	3630	3390	3210	3070	2950	2810
125x65x4,0CC	7.23	3340	3020	2820	2660	2440	2320	2030
100x50x4,0CC	5.59	2840	2520	2300	2130	2000	1850	1740
75x40x4,0CC	4.25	2200	1920	1750	1630	1530	1440	1350

DuraGal Channels and RHS as Lintels - Garage Beams, Window Heads
W28N to W41N

Effective Roof Width = $L_1 / 2 + L_2$

(= Effective Floor Width x 3; in tables for trussed roof)

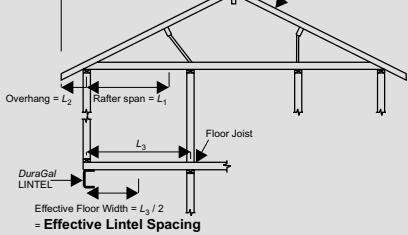


Effective Floor Width = $L_3 / 2$

= Effective Lintel Spacing

Effective Roof Width = $L_1 / 2 + L_2$

(= Effective Floor Width in tables for pitched roof)



Effective Floor Width = $L_3 / 2$

= Effective Lintel Spacing

Supporting ROOF and FLOOR Loads

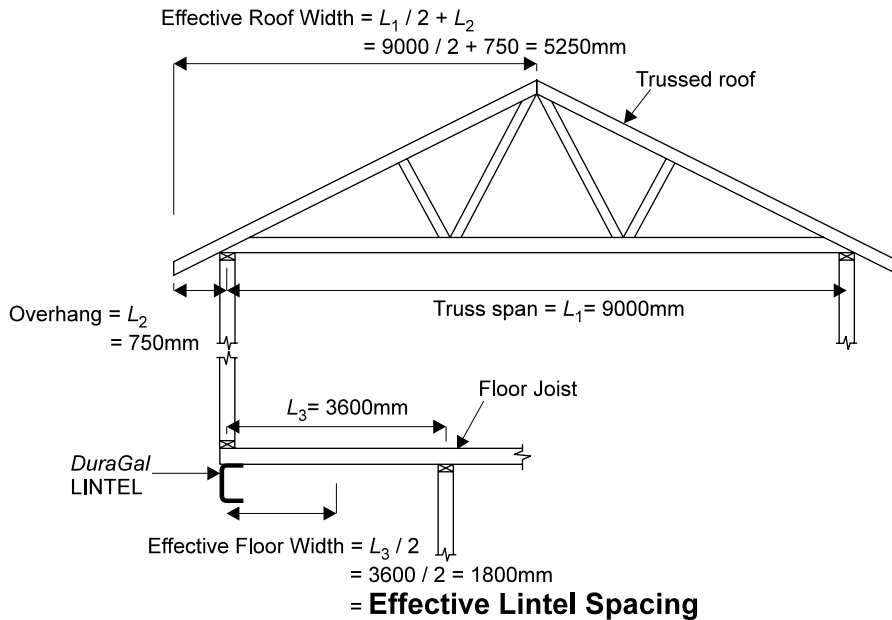
150x50x6,0RHS	16.7	4170	3790	3530	3350	3200	3080	2990
150x50x5,0RHS	14.2	4040	3670	3430	3240	3100	2990	2890
150x50x4,0RHS	11.6	3880	3520	3290	3110	2970	2860	2770
150x50x3,0RHS	8.96	3540	3210	2990	2830	2710	2570	2460
150x50x2,0RHS	6.07	3370	3050	2850	2640	2460	2300	2180
125x75x5,0RHS	14.2	3850	3490	3260	3090	2950	2840	2750
125x75x4,0RHS	11.6	3690	3350	3120	2960	2830	2720	2610
125x75x3,0RHS	8.96	3500	3170	2950	2800	2670	2530	2420
125x75x2,5RHS	7.53	3360	3050	2840	2680	2550	2400	2280
125x75x2,0RHS	6.07	3200	2900	2700	2530	2220	1930	1690
100x50x6,0RHS	12.0	3190	2900	2700	2510	2370	2250	2150
100x50x5,0RHS	10.3	3110	2820	2610	2420	2280	2170	2080
100x50x4,0RHS	8.49	3000	2720	2480	2300	2170	2060	1970
100x50x3,0RHS	7.53	2920	2630	2400	2230	2100	1990	1910
100x50x2,0RHS	6.07	2850	2550	2320	2150	2030	1930	1840
100x50x1,6RHS	5.56	2750	2420	2200	2050	1930	1830	1750
100x50x1,2RHS	4.50	2590	2270	2060	1920	1810	1720	1640
75x50x6,0RHS	9.67	2630	2310	2100	1950	1840	1750	1670
75x50x5,0RHS	8.35	2550	2240	2040	1890	1780	1690	1620
75x50x4,0RHS	6.92	2440	2140	1940	1810	1700	1620	1550
75x50x3,0RHS	5.42	2290	2010	1830	1700	1600	1520	1450
75x50x2,5RHS	4.58	2190	1910	1740	1620	1520	1450	1380
75x50x2,0RHS	3.72	2050	1800	1630	1520	1430	1360	1300
75x50x1,6RHS	3.01	1930	1680	1530	1410	1280	1190	1110
75x50x1,2RHS	2.42	1880	1650	1500	1390	1260	1170	1100
75x50x0,8RHS	1.99	1770	1550	1410	1310	1230	1140	1070
65x35x3,0RHS	2.38	1670	1460	1330	1230	1160	1080	1010
65x35x2,5RHS	1.99	1570	1370	1250	1160	1090	1010	940
65x35x2,0RHS	1.63	1470	1280	1170	1080	1010	930	860
65x35x1,6RHS	1.33	1370	1190	1090	1000	930	860	790
65x35x1,2RHS	1.03	1270	1100	1000	930	860	790	730
65x35x0,8RHS	0.73	1170	1000	900	830	760	690	630
50x20x2,5RHS	2.42	1260	1100	1000	930	870	800	730
50x20x2,0RHS	1.99	1190	1040	950	880	830	760	690
50x20x1,6RHS	1.63	1130	990	900	830	780	710	640

* Pitched Roof - Effective Roof Width is assumed equal to Effective Floor Width

DuraGal Channels and RHS as Lintels - Garage Beams, Window Heads
W28N to W41N

EXAMPLE

Size a beam over a garage door carrying Timber Floor and Masonry Tiled Trussed Roof. The Effective load widths are shown below. The required span of the garage lintel is 5400mm. The Wind classification is given as W41N (N3).



Step 1: Lintel is carrying ROOF and FLOOR loads

Step 2: ROOF - Masonry Tiles

Step 3: Wind classification W41N

Step 4: FLOOR - Timber

Step 5: ROOF - Trussed

Step 6: (Refer to diagram)

Effective Floor Width = 1800mm

Effective Roof Width = 5275mm

Check Table assumption

3 x Floor Width = 3 x 1800

= 5400mm

> 5250mm

Step 7: Required Lintel Spacing

= 1800mm

= (effective floor width)

Step 8: Required Lintel Span = 5400mm

Step 9: Select appropriate table

Step 10: Select column with

Effective Lintel Spacing = 1800mm

Step 11: Select 300x90x8.0CC

Maximum span = 5480mm > 5400mm

DuraGal Section	Mass kg/m	Effective Lintel Spacing (mm)						
		1200	1800	2400	3000	3600	4200	4800
300x90x8.0CC	21.6	6040	5110	4840	4630	4460	4320	
250x90x6.0CC	19.2	5590	5070	4730	4480	4310	4070	
230x75x6.0CC	16.9	5010	4540	4230	4010	3830	3440	3010
200x75x6.0CC	15.5	4280	3890	3620	3430	3280	3160	3050
200x75x5.0CC	12.4	4020	3640	3390	3190	2660	2290	2000
180x75x5.0CC	11.6	3770	3420	3180	3010	2680	2300	2010
150x75x5.0CC	10.5	3380	3070	2860	2700	2550	2300	2000
150x50x4.0CC	7.23	2820	2500	2270	2110	1810	1550	1360
100x50x4.0CC	5.59	2300	2010	1830	1700	1600	1520	1370
75x40x4.0CC	4.25	1750	1530	1390	1290	1220	1160	1100
150x50x6.0RHS	16.7	3530	3200	2990	2830	2700	2570	2460
150x50x5.0RHS	14.2	3430	3100	2890	2740	2590	2460	2350
150x50x4.0RHS	11.6	3290	2970	2770	2600	2450	2320	2220
150x50x3.0RHS	8.96	3110	2820	2600	2410	2270	2160	2060
150x50x2.5RHS	7.53	2990	2710	2460	2290	2150	1920	1680
150x50x2.0RHS	6.07	2840	2270	1700	1360	1140	980	850
125x75x6.0RHS	16.7	3370	3050	2840	2690	2530	2410	2300
125x75x5.0RHS	14.2	3260	2950	2750	2570	2420	2300	2200
125x75x4.0RHS	11.6	3120	2830	2610	2430	2290	2170	2080
125x75x3.0RHS	8.96	2950	2670	2420	2250	2120	2010	1930
125x75x2.5RHS	7.53	2840	2530	2300	2130	2010	1910	1830
125x75x2.0RHS	6.07	2700	2360	2150	1800	1500	1290	1130
100x50x6.0RHS	12.0	2700	2370	2150	2000	1880	1790	1710
100x50x5.0RHS	10.3	2610	2280	2080	1930	1820	1730	1650
100x50x4.0RHS	8.49	2480	2170	1970	1830	1720	1640	1570
100x50x3.5RHS	7.53	2400	2100	1910	1770	1670	1580	1520
100x50x3.0RHS	6.60	2320	2030	1840	1710	1610	1530	1460
100x50x2.5RHS	5.56	2200	1930	1750	1630	1530	1450	1390
100x50x2.0RHS	4.50	2060	1810	1640	1520	1430	1360	1300
75x50x6.0RHS	9.67	2100	1840	1670	1550	1460	1390	1330
75x50x5.0RHS	8.35	2040	1780	1620	1510	1420	1350	1290
75x50x4.0RHS	6.92	1940	1700	1550	1440	1350	1290	1230
75x50x3.0RHS	5.42	1830	1600	1450	1350	1270	1210	1160
75x50x2.5RHS	4.58	1740	1520	1380	1290	1210	1150	1100
75x50x2.0RHS	3.72	1630	1430	1300	1210	1140	1080	1030
75x25x4.0RHS	3.01	1530	1340	1220	1130	1060	1000	970
75x25x3.5RHS	3.60	1500	1310	1190	1100	1040	990	940
75x25x3.0RHS	2.93	1410	1230	1120	1040	980	930	890
75x25x2.5RHS	2.38	1330	1160	1050	980	920	870	830
65x35x4.0RHS	5.35	1570	1370	1250	1160	1090	1030	990
65x35x3.0RHS	4.25	1490	1300	1180	1100	1030	980	940
65x35x2.5RHS	3.80	1420	1240	1130	1050	990	940	900
60x25x3.0RHS	2.93	1340	1170	1060	990	930	880	850
50x25x3.0RHS	3.07	1100	960	870	810	760	720	690
50x25x2.5RHS	2.62	1050	920	840	780	730	690	660
50x25x2.0RHS	2.15	1000	870	790	730	680	640	610
50x25x1.5RHS	1.75	940	820	750	690	650	620	590
50x20x3.0RHS	2.83	1040	910	830	770	720	690	660
50x20x2.5RHS	2.42	1000	870	790	740	690	660	630
50x20x2.0RHS	1.99	950	830	750	700	660	630	600
50x20x1.5RHS	1.63	900	780	710	660	620	590	560

* Trussed Roof - Effective Roof Width is assumed equal to 3 times Effective Floor Width

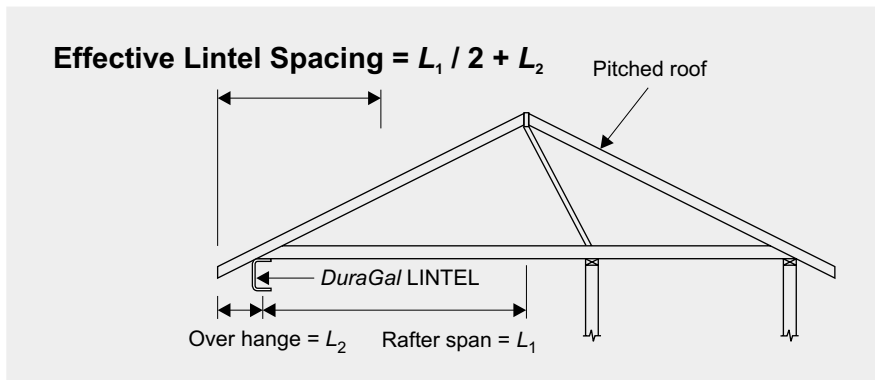
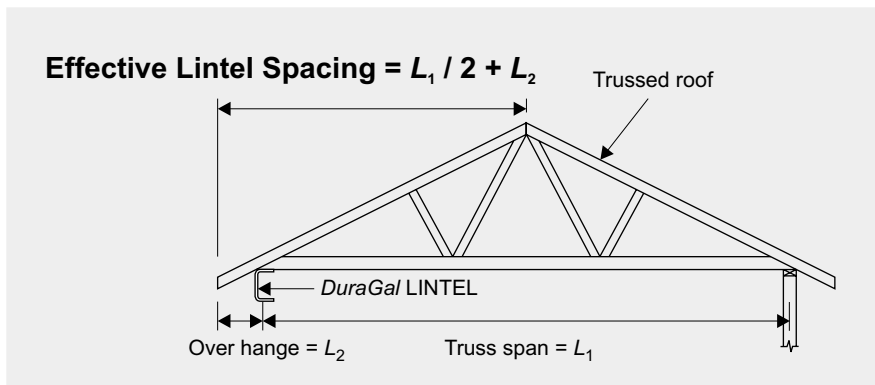
DuraGal Channels and RHS as Lintels - Garage Beams, Window Heads W28N to W41N

Supporting ROOF and FLOOR Loads

LINTEL SUPPORTING ROOF ONLY

Applied loads and deflection limits used to generate the tables on pages 10 and 11.

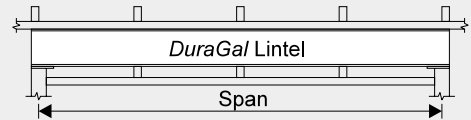
ROOFING	LOAD (kPa)		DEFLECTION (mm)	
	Dead Load (G)	Live Load (Q)	Dead Load (G)	Live Load (Q=1.1kN)
Masonry Tiles and Ceiling	0.9	Larger of 0.25	Span / 300	Span / 180
Steel Sheeting and Ceiling	0.4	and 1.8 / Area + 0.12	to 9mm	to 10mm



ROOF - Masonry Tiles & Ceiling

Maximum Lintel Span (mm)

SINGLE SPAN



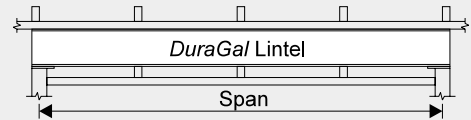
Supporting ROOF Loads only

DuraGal® Section	Mass kg/m	Effective Lintel Spacing (mm)												
		1200	1800	2400	3000	3600	4200	4800	5400	6000	6600	7200	7800	8400
300x90x8.0CC	28.5	8190	7530	7070	6730	6450	6230	6040	5870	5730	5600	5480	5380	5280
300x90x7.0CC	25.1	7950	7300	6850	6510	6240	6020	5840	5680	5540	5410	5300	5200	5100
300x90x6.0CC	21.6	7650	7010	6570	6240	5980	5770	5590	5430	5300	5180	5070	4970	4880
250x90x6.0CC	19.2	6880	6290	5900	5600	5360	5170	5010	4870	4750	4640	4540	4450	4380
230x75x6.0CC	16.9	6430	5870	5500	5220	5000	4820	4670	4540	4420	4320	4230	4150	4070
200x75x6.0CC	15.5	5920	5410	5060	4800	4600	4430	4290	4170	4070	3970	3890	3810	3750
200x75x5.0CC	12.4	5570	5080	4750	4500	4310	4150	4020	3900	3810	3720	3640	3570	3500
180x75x5.0CC	11.6	5240	4770	4460	4230	4050	3900	3770	3670	3570	3490	3420	3350	3290
150x75x5.0CC	10.5	4710	4290	4010	3800	3630	3500	3390	3290	3210	3130	3070	3010	2950
125x65x4.0CC	7.23	3940	3580	3340	3160	3020	2910	2820	2740	2660	2570	2500	2440	2380
100x50x4.0CC	5.59	3350	3040	2840	2680	2520	2400	2300	2210	2130	2070	2010	1960	1910
75x40x4.0CC	4.25	2740	2410	2200	2040	1920	1830	1750	1680	1630	1580	1530	1490	1450
150x50x6.0RHS	16.7	4870	4450	4170	3950	3790	3650	3530	3430	3350	3270	3200	3140	3080
150x50x5.0RHS	14.2	4740	4320	4040	3830	3670	3540	3430	3330	3240	3170	3100	3040	2990
150x50x4.0RHS	11.6	4560	4150	3880	3680	3520	3390	3290	3190	3110	3040	2970	2920	2860
150x50x3.0RHS	8.96	4340	3940	3680	3490	3340	3210	3110	3020	2940	2880	2820	2760	2710
150x50x2.5RHS	7.53	4180	3790	3540	3350	3210	3090	2990	2900	2830	2760	2710	2640	2570
150x50x2.0RHS	6.07	3980	3620	3370	3190	3050	2940	2840	2760	2690	2610	2530	2350	2190
125x75x6.0RHS	16.7	4640	4240	3970	3760	3610	3480	3370	3270	3190	3120	3050	2990	2940
125x75x5.0RHS	14.2	4510	4110	3850	3650	3490	3370	3260	3170	3090	3020	2950	2900	2840
125x75x4.0RHS	11.6	4340	3950	3690	3500	3350	3230	3120	3040	2960	2890	2830	2770	2720
125x75x3.0RHS	8.96	4120	3740	3500	3310	3170	3050	2950	2870	2800	2730	2670	2600	2530
125x75x2.5RHS	7.53	3970	3600	3360	3190	3050	2930	2840	2760	2680	2600	2530	2460	2400
125x75x2.0RHS	6.07	3780	3430	3200	3030	2900	2790	2700	2600	2510	2430	2360	2300	2250
100x50x6.0RHS	12.0	3750	3410	3190	3030	2900	2790	2700	2600	2510	2440	2370	2310	2250
100x50x5.0RHS	10.3	3660	3330	3110	2950	2820	2720	2610	2510	2420	2350	2280	2220	2170
100x50x4.0RHS	8.49	3530	3210	3000	2840	2720	2590	2480	2380	2300	2230	2170	2110	2060
100x50x3.5RHS	7.53	3450	3130	2920	2770	2630	2500	2400	2310	2230	2160	2100	2040	1990
100x50x3.0RHS	6.60	3370	3060	2850	2700	2550	2420	2320	2230	2150	2090	2030	1970	1930
100x50x2.5RHS	5.56	3250	2950	2750	2570	2420	2300	2200	2120	2050	1980	1930	1880	1830
100x50x2.0RHS	4.50	3100	2810	2590	2410	2270	2160	2060	1990	1920	1860	1810	1760	1720
75x50x6.0RHS	9.67	3110	2830	2630	2450	2310	2190	2100	2020	1950	1890	1840	1790	1750
75x50x5.0RHS	8.35	3050	2770	2550	2370	2240	2130	2040	1960	1890	1830	1780	1740	1690
75x50x4.0RHS	6.92	2950	2670	2440	2270	2140	2030	1940	1870	1810	1750	1700	1660	1620
75x50x3.0RHS	5.42	2820	2520	2290	2130	2010	1910	1830	1760	1700	1650	1600	1560	1520
75x50x2.5RHS	4.58	2730	2400	2190	2030	1910	1820	1740	1670	1620	1570	1520	1480	1450
75x50x2.0RHS	3.72	2570	2260	2050	1910	1800	1710	1630	1570	1520	1470	1430	1390	1360
75x50x1.6RHS	3.01	2410	2120	1930	1790	1680	1600	1530	1470	1420	1380	1340	1300	1270
75x25x2.5RHS	3.60	2360	2070	1880	1750	1650	1560	1500	1440	1390	1350	1310	1270	1240
75x25x2.0RHS	2.93	2220	1950	1770	1650	1550	1470	1410	1360	1310	1270	1230	1200	1170
75x25x1.6RHS	2.38	2090	1830	1670	1550	1460	1380	1330	1270	1230	1190	1160	1130	1100
65x35x4.0RHS	5.35	2460	2160	1970	1830	1720	1640	1570	1510	1460	1410	1370	1330	1300
65x35x3.0RHS	4.25	2340	2050	1870	1740	1640	1560	1490	1430	1380	1340	1300	1270	1240
65x35x2.5RHS	3.60	2240	1960	1790	1660	1560	1490	1420	1370	1320	1280	1240	1210	1180
65x35x2.0RHS	2.93	2110	1850	1680	1560	1470	1400	1340	1290	1240	1210	1170	1140	1110
50x25x3.0RHS	3.07	1730	1510	1380	1280	1200	1150	1100	1050	1020	990	960	930	910
50x25x2.5RHS	2.62	1660	1450	1320	1230	1160	1100	1050	1010	980	950	920	900	870
50x25x2.0RHS	2.15	1570	1380	1250	1160	1100	1040	1000	960	930	900	870	850	830
50x25x1.6RHS	1.75	1490	1300	1180	1100	1030	980	940	900	870	840	820	800	780
50x20x3.0RHS	2.83	1640	1440	1310	1210	1140	1090	1040	1000	960	930	910	880	860
50x20x2.5RHS	2.42	1580	1380	1260	1170	1100	1040	1000	960	930	900	870	850	830
50x20x2.0RHS	1.99	1500	1310	1190	1110	1040	990	950	910	880	850	830	810	790
50x20x1.6RHS	1.63	1420	1240	1130	1050	990	940	900	860	830	810	780	760	740

ROOF - Steel Sheeting & Ceiling

Maximum Lintel Span (mm)

SINGLE SPAN



Supporting ROOF Loads only

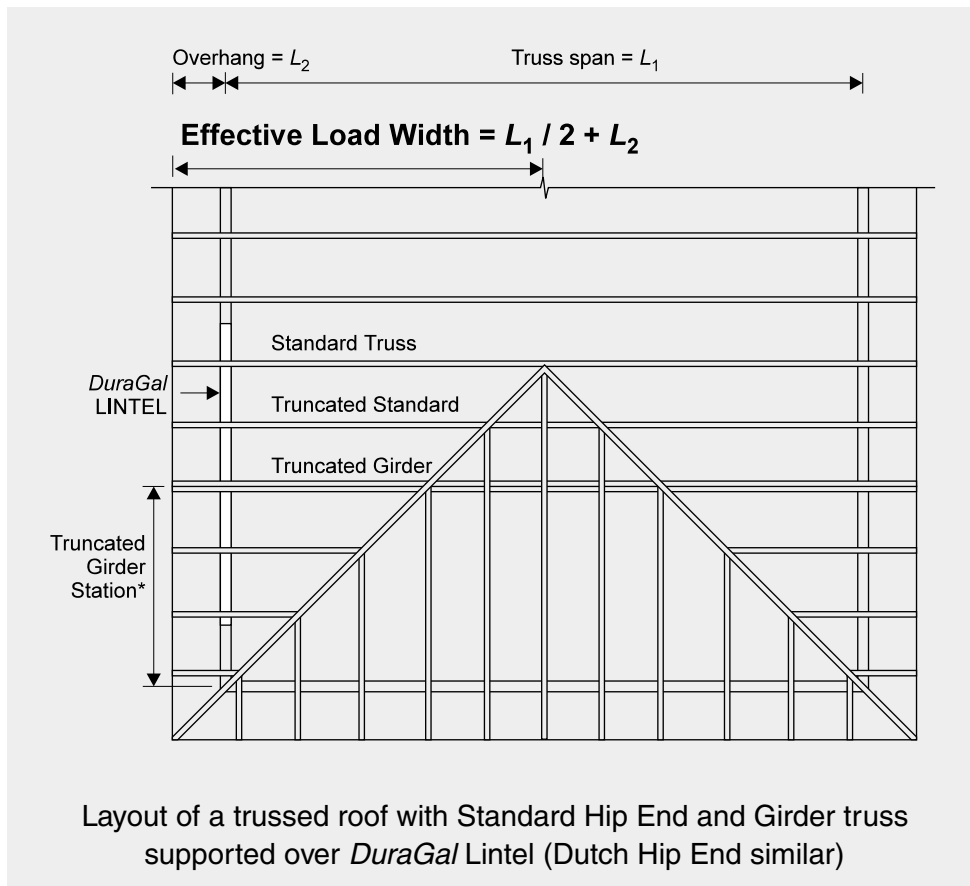
DuraGal® Section	Mass kg/m	Effective Lintel Spacing (mm)												
		1200	1800	2400	3000	3600	4200	4800	5400	6000	6600	7200	7800	8400
300x90x8.0CC	28.5	9470	8840	8380	8010	7720	7470	7260	7070	6910	6760	6630	6510	6400
300x90x7.0CC	25.1	9240	8610	8140	7780	7490	7240	7030	6850	6690	6550	6420	6300	6190
300x90x6.0CC	21.6	8940	8300	7840	7480	7190	6950	6750	6570	6410	6280	6150	6040	5930
250x90x6.0CC	19.2	8070	7480	7050	6720	6460	6240	6060	5900	5750	5630	5520	5410	5320
230x75x6.0CC	16.9	7580	7000	6590	6280	6030	5830	5650	5500	5370	5250	5140	5040	4960
200x75x6.0CC	15.5	7000	6460	6080	5790	5560	5360	5200	5060	4940	4830	4730	4640	4560
200x75x5.0CC	12.4	6620	6090	5720	5440	5220	5030	4880	4750	4630	4520	4430	4350	4270
180x75x5.0CC	11.6	6240	5730	5380	5110	4900	4730	4580	4460	4350	4250	4160	4080	4010
150x75x5.0CC	10.5	5620	5160	4840	4600	4410	4250	4120	4010	3910	3820	3740	3670	3600
125x65x4.0CC	7.23	4730	4320	4050	3840	3680	3550	3430	3340	3250	3180	3110	3050	2950
100x50x4.0CC	5.59	4040	3690	3450	3270	3130	3010	2920	2840	2760	2700	2620	2510	2420
75x40x4.0CC	4.25	3320	3020	2820	2660	2510	2390	2280	2200	2120	2060	2000	1950	1880
150x50x6.0RHS	16.7	5740	5300	4990	4760	4570	4410	4280	4170	4060	3970	3890	3820	3750
150x50x5.0RHS	14.2	5610	5170	4860	4630	4440	4290	4160	4040	3940	3860	3780	3700	3640
150x50x4.0RHS	11.6	5430	4990	4680	4450	4270	4120	3990	3880	3790	3700	3620	3550	3490
150x50x3.0RHS	8.96	5190	4750	4450	4230	4050	3910	3790	3680	3590	3510	3430	3370	3310
150x50x2.5RHS	7.53	5020	4590	4290	4070	3900	3760	3640	3540	3450	3370	3300	3240	3180
150x50x2.0RHS	6.07	4800	4380	4100	3880	3720	3580	3470	3370	3290	3180	2910	2680	2490
125x75x6.0RHS	16.7	5470	5050	4760	4530	4350	4200	4080	3970	3870	3780	3710	3640	3570
125x75x5.0RHS	14.2	5340	4920	4630	4400	4220	4080	3950	3850	3750	3670	3590	3520	3460
125x75x4.0RHS	11.6	5160	4740	4450	4230	4060	3920	3800	3690	3600	3520	3450	3380	3320
125x75x3.0RHS	8.96	4930	4520	4230	4020	3850	3710	3600	3500	3410	3330	3260	3200	3140
125x75x2.5RHS	7.53	4760	4350	4080	3870	3710	3570	3460	3360	3280	3200	3140	3070	3020
125x75x2.0RHS	6.07	4560	4160	3890	3690	3530	3400	3290	3200	3120	3030	2900	2790	2690
100x50x6.0RHS	12.0	4460	4100	3850	3660	3510	3390	3280	3190	3110	3040	2980	2920	2870
100x50x5.0RHS	10.3	4370	4000	3760	3570	3420	3300	3200	3110	3030	2960	2900	2850	2790
100x50x4.0RHS	8.49	4230	3870	3630	3440	3300	3180	3080	3000	2920	2850	2790	2740	2690
100x50x3.5RHS	7.53	4140	3790	3550	3360	3220	3110	3010	2920	2850	2790	2730	2670	2600
100x50x3.0RHS	6.60	4050	3700	3460	3280	3140	3030	2930	2850	2780	2720	2650	2580	2520
100x50x2.5RHS	5.56	3920	3570	3340	3170	3030	2920	2830	2750	2670	2590	2520	2450	2390
100x50x2.0RHS	4.50	3750	3410	3190	3020	2890	2780	2690	2590	2500	2430	2360	2300	2240
75x50x6.0RHS	9.67	3720	3410	3200	3040	2910	2810	2720	2630	2540	2460	2400	2340	2280
75x50x5.0RHS	8.35	3660	3340	3130	2970	2850	2750	2650	2550	2460	2390	2320	2260	2210
75x50x4.0RHS	6.92	3550	3240	3030	2880	2760	2640	2530	2440	2360	2280	2220	2160	2110
75x50x3.0RHS	5.42	3410	3110	2900	2750	2620	2490	2380	2290	2220	2150	2090	2030	1990
75x50x2.5RHS	4.58	3300	3000	2800	2640	2490	2370	2270	2190	2110	2050	1990	1940	1890
75x50x2.0RHS	3.72	3160	2870	2670	2490	2340	2230	2130	2050	1980	1920	1870	1820	1780
75x50x1.6RHS	3.01	2990	2740	2510	2330	2200	2090	2000	1930	1830	1750	1670	1610	1550
75x25x2.5RHS	3.60	2920	2680	2450	2280	2150	2040	1950	1880	1820	1760	1710	1670	1630
75x25x2.0RHS	2.93	2750	2540	2310	2150	2030	1930	1840	1770	1710	1660	1610	1570	1530
75x25x1.6RHS	2.38	2580	2390	2170	2020	1900	1810	1730	1670	1610	1560	1520	1460	1410
65x35x4.0RHS	5.35	3040	2770	2550	2380	2240	2130	2040	1970	1900	1840	1790	1740	1700
65x35x3.0RHS	4.25	2910	2660	2430	2260	2130	2030	1940	1870	1810	1750	1700	1660	1620
65x35x2.5RHS	3.60	2770	2550	2330	2160	2040	1940	1860	1790	1730	1670	1630	1580	1540
65x35x2.0RHS	2.93	2610	2410	2190	2040	1920	1830	1750	1680	1630	1580	1530	1490	1460
50x25x3.0RHS	3.07	2140	1970	1790	1670	1570	1500	1430	1380	1330	1290	1250	1220	1190
50x25x2.5RHS	2.62	2050	1890	1730	1600	1510	1440	1380	1320	1280	1240	1200	1170	1140
50x25x2.0RHS	2.15	1940	1800	1640	1520	1430	1360	1300	1250	1210	1170	1140	1110	1080
50x25x1.6RHS	1.75	1830	1700	1540	1430	1350	1280	1230	1180	1140	1110	1070	1050	1010
50x20x3.0RHS	2.83	2020	1870	1700	1580	1490	1420	1360	1310	1260	1220	1190	1160	1130
50x20x2.5RHS	2.42	1950	1800	1640	1520	1440	1370	1310	1260	1210	1180	1140	1110	1090
50x20x2.0RHS	1.99	1850	1710	1560	1450	1360	1300	1240	1190	1150	1120	1080	1060	1030
50x20x1.6RHS	1.63	1720	1620	1470	1370	1290	1220	1170	1130	1090	1050	1020	990	950

[BLANK]

LINTEL SUPPORTING ROOF ONLY WITH GIRDER TRUSS*

Applied loads and deflection limits used to generate the tables on pages 14 and 15.

ROOFING	LOAD (kPa)		DEFLECTION (mm)	
	Dead Load (G)	Live Load (Q)	Dead Load (G)	Live Load (Q=1.1kN)
Masonry Tiles and Ceiling	0.9	Larger of 0.25	Span / 300	Span / 180
Steel Sheeting and Ceiling	0.4	and 1.8 / Area + 0.12	to 9mm	to 10mm



*Girder Truss placed anywhere along the Lintel with Maximum Girder Station used to generate tables equals:

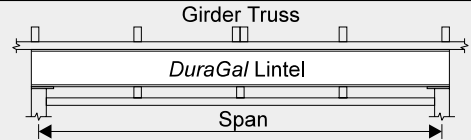
Effective Load Width (mm)	Maximum Girder Station (mm)
≤ 3600	= Effective Load Width
> 3600	3600

ROOF - Masonry Tiles & Ceiling - with Girder Truss*

Supporting ROOF Loads only

Maximum Lintel Span (mm)

SINGLE SPAN



DuraGal® Section	Mass kg/m	Effective Lintel Spacing (mm)												
		1200	1800	2400	3000	3600	4200	4800	5400	6000	6600	7200	7800	8400
300x90x8CC	28.5	8160	7470	6970	6560	6220	5980	5780	5610	5460	5330	5210	5100	5000
300x90x7CC	25.1	7930	7240	6740	6340	6000	5770	5580	5410	5260	5130	5020	4470	3900
300x90x6CC	21.6	7620	6950	6460	6060	5730	5510	5320	4790	3980	3310	2740	2270	1860
250x90x6CC	19.2	6850	6230	5770	5400	5090	4890	4720	4570	4140	3460	2880	2390	1970
230x75x6CC	16.9	6400	5800	5370	5010	4710	4520	4360	4230	4110	3540	2950	2460	2030
200x75x6CC	15.5	5890	5330	4920	4580	4300	4120	3970	3850	3740	3630	3040	2530	2100
200x75x5CC	12.4	5540	4990	4590	4270	3990	3740	2840	2140	1570	1110	720		
180x75x5CC	11.6	5200	4680	4300	3990	3720	3560	2910	2200	1630	1160	770		
150x75x5CC	10.5	4670	4190	3830	3540	3290	3150	3030	2300	1720	1240	850		
125x65x4CC	7.23	3890	3460	3140	2880	2300	1460	770						
100x50x4CC	5.59	3290	2910	2590	2270	2000	1560	880						
75x40x4CC	4.25	2660	2210	1870	1610	1400	1310	970						
150x50x6.0RHS	16.7	4830	4360	4000	3710	3450	3310	3190	3090	3000	2920	2850	2780	2720
150x50x5.0RHS	14.2	4700	4230	3870	3580	3330	3190	3080	2980	2890	2810	2740	2670	2590
150x50x4.0RHS	11.6	4520	4050	3710	3420	3180	3040	2930	2830	2750	2660	2570	2490	2410
150x50x3.0RHS	8.96	4290	3840	3500	3220	2980	2860	2750	2640	2530	2430	2340	2270	2200
150x50x2.5RHS	7.53	4130	3690	3350	3080	2850	2730	2590	2470	2360	1900	1450	1060	730
150x50x2.0RHS	6.07	3930	3500	3180	2910	1380								
125x75x6.0RHS	16.7	4600	4140	3800	3510	3270	3130	3020	2920	2830	2760	2680	2600	2520
125x75x5.0RHS	14.2	4470	4010	3670	3390	3150	3020	2910	2810	2730	2630	2540	2460	2380
125x75x4.0RHS	11.6	4290	3850	3510	3230	3000	2870	2760	2660	2550	2450	2360	2290	2220
125x75x3.0RHS	8.96	4070	3630	3310	3040	2810	2690	2540	2420	2320	2230	2150	2080	2010
125x75x2.5RHS	7.53	3920	3490	3170	2900	2680	2510	2380	2260	2100	1900	1730	1580	1450
125x75x2.0RHS	6.07	3730	3310	3000	2740	2240	1920	1470	910					
100x50x6.0RHS	12.0	3700	3300	2990	2740	2470	2320	2190	2090	1990	1910	1840	1780	1730
100x50x5.0RHS	10.3	3610	3210	2910	2640	2360	2210	2090	1990	1900	1820	1760	1700	1640
100x50x4.0RHS	8.49	3480	3090	2790	2490	2210	2070	1960	1860	1780	1710	1640	1590	1530
100x50x3.5RHS	7.53	3390	3010	2710	2390	2120	1980	1870	1780	1700	1630	1570	1520	1470
100x50x3.0RHS	6.60	3310	2930	2620	2290	2030	1900	1790	1700	1630	1560	1500	1450	1400
100x50x2.5RHS	5.56	3190	2810	2470	2150	1900	1780	1680	1590	1520	1460	1400	1350	1310
100x50x2.0RHS	4.50	3040	2660	2280	1990	1740	1630	1540	1460	1390	1250	1110	820	
75x50x6.0RHS	9.67	3060	2700	2330	2030	1790	1670	1580	1500	1430	1370	1320	1270	1230
75x50x5.0RHS	8.35	2990	2610	2250	1950	1720	1600	1510	1440	1370	1310	1260	1220	1180
75x50x4.0RHS	6.92	2890	2480	2130	1840	1610	1510	1420	1350	1290	1230	1190	1140	1110
75x50x3.0RHS	5.42	2760	2320	1970	1700	1490	1390	1310	1240	1180	1130	1090	1050	1010
75x50x2.5RHS	4.58	2640	2190	1860	1600	1390	1300	1220	1160	1100	1060	1020	980	920
75x50x2.0RHS	3.72	2480	2040	1720	1470	1280	1190	1120	1060	1010	940	870	790	720
75x50x1.6RHS	3.01	2310	1890	1580	1350	1080	930	800	690	610				
75x25x2.5RHS	3.60	2250	1840	1540	1310	1130	1060	990	940	890	820	760	700	660
75x25x2.0RHS	2.93	2110	1720	1430	1210	1040	970	890	810	750	690	630	570	520
75x25x1.6RHS	2.38	1980	1590	1320	1110	910	770	670						
65x35x4.0RHS	5.35	2360	1940	1630	1390	1210	1130	1060	1000	960	910	880	850	820
65x35x3.0RHS	4.25	2240	1830	1530	1300	1130	1050	990	930	890	850	820	760	710
65x35x2.5RHS	3.60	2130	1730	1440	1220	1060	980	930	880	830	770	710	660	620
65x35x2.0RHS	2.93	2000	1610	1340	1130	970	910	840	760	700	650	600		
50x25x3.0RHS	3.07	1600	1260	1030	860	730	680	640						
50x25x2.5RHS	2.62	1530	1200	970	810	690	620							
50x25x2.0RHS	2.15	1430	1120	900	750									
50x25x1.6RHS	1.75	1340	1040	840	640									
50x20x3.0RHS	2.83	1500	1180	960	800	680	630							
50x20x2.5RHS	2.42	1440	1120	910	760	620								
50x20x2.0RHS	1.99	1360	1050	850	680									
50x20x1.6RHS	1.63	1270	980	760										

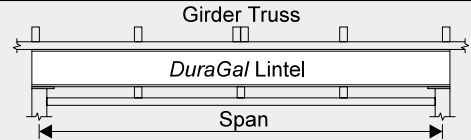
* Girder placed anywhere along the Lintel with maximum Girder station as shown on page 13

ROOF - Steel Sheeting & Ceiling - with Girder Truss*

Supporting ROOF Loads only

Maximum Lintel Span (mm)

SINGLE SPAN



DuraGal® Section	Mass kg/m	Effective Lintel Spacing (mm)												
		1200	1800	2400	3000	3600	4200	4800	5400	6000	6600	7200	7800	8400
300x90x8CC	28.5	9450	8800	8300	7890	7530	7270	7050	6860	6690	6540	6400	6270	6160
300x90x7CC	25.1	9230	8560	8060	7650	7290	7040	6820	6630	6460	6310	6180	5740	5060
300x90x6CC	21.6	8920	8250	7750	7340	6990	6740	6520	6190	5190	4370	3700	3130	2640
250x90x6CC	19.2	8050	7430	6950	6570	6230	6010	5810	5640	5360	4530	3840	3260	2760
230x75x6CC	16.9	7550	6940	6490	6110	5790	5570	5390	5230	5090	4600	3910	3330	2820
200x75x6CC	15.5	6980	6400	5960	5610	5300	5100	4930	4780	4650	4540	3990	3400	2900
200x75x5CC	12.4	6600	6020	5600	5250	4940	4750	3790	2960	2290	1750	1300	920	590
180x75x5CC	11.6	6210	5660	5250	4910	4620	4440	3860	3020	2350	1800	1350	970	640
150x75x5CC	10.5	5590	5080	4700	4380	4100	3940	3800	3140	2460	1900	1440	1050	710
125x65x4CC	7.23	4690	4230	3880	3590	3130	2160	1430	870					
100x50x4CC	5.59	4000	3580	3260	2990	2710	2260	1520	950					
75x40x4CC	4.25	3260	2890	2570	2250	1810	1590	1420	1020					
150x50x6.0RHS	16.7	5710	5230	4860	4550	4280	4120	3980	3850	3750	3650	3570	3490	3420
150x50x5.0RHS	14.2	5580	5090	4720	4410	4140	3980	3840	3720	3620	3530	3440	3370	3300
150x50x4.0RHS	11.6	5400	4910	4540	4230	3960	3800	3670	3550	3450	3360	3280	3210	3150
150x50x3.0RHS	8.96	5160	4670	4300	4000	3740	3580	3450	3340	3250	3160	3090	3020	2900
150x50x2.5RHS	7.53	4980	4500	4130	3830	3580	3430	3300	3200	3100	2640	2120	1680	1300
150x50x2.0RHS	6.07	4760	4290	3930	3630	2210	1370	750						
125x75x6.0RHS	16.7	5440	4980	4620	4320	4060	3900	3760	3650	3550	3460	3380	3300	3240
125x75x5.0RHS	14.2	5310	4840	4480	4180	3920	3770	3630	3520	3420	3330	3250	3180	3120
125x75x4.0RHS	11.6	5130	4660	4300	4000	3750	3590	3470	3360	3260	3180	3100	3030	2970
125x75x3.0RHS	8.96	4890	4430	4070	3780	3520	3380	3260	3150	3060	2940	2730	2540	2370
125x75x2.5RHS	7.53	4730	4260	3910	3620	3370	3230	2930	2630	2380	2160	1980	1820	1670
125x75x2.0RHS	6.07	4520	4060	3710	3430	2640	2250	1940	1510	990				
100x50x6.0RHS	12.0	4420	4010	3680	3410	3180	3050	2940	2840	2760	2680	2590	2510	2430
100x50x5.0RHS	10.3	4330	3910	3590	3320	3080	2960	2850	2750	2660	2560	2470	2390	2320
100x50x4.0RHS	8.49	4190	3770	3450	3180	2950	2830	2730	2610	2500	2400	2320	2200	2070
100x50x3.5RHS	7.53	4100	3680	3360	3100	2870	2750	2630	2510	2400	2300	2150	2010	1890
100x50x3.0RHS	6.60	4010	3590	3280	3010	2790	2660	2520	2400	2260	2100	1950	1830	1720
100x50x2.5RHS	5.56	3870	3460	3150	2890	2660	2500	2370	2160	1990	1840	1710	1600	1500
100x50x2.0RHS	4.50	3700	3300	2990	2740	2460	2220	1990	1810	1610	1450	1300	1180	1040
75x50x6.0RHS	9.67	3680	3300	3010	2770	2500	2350	2230	2120	2030	1950	1880	1820	1760
75x50x5.0RHS	8.35	3610	3230	2940	2700	2410	2260	2140	2040	1950	1870	1810	1730	1630
75x50x4.0RHS	6.92	3500	3120	2830	2550	2280	2140	2020	1920	1840	1740	1610	1510	1420
75x50x3.0RHS	5.42	3360	2980	2700	2370	2110	1970	1860	1720	1570	1450	1350	1260	1180
75x50x2.5RHS	4.58	3240	2870	2550	2240	1980	1850	1660	1500	1380	1270	1170	1100	1030
75x50x2.0RHS	3.72	3100	2740	2370	2070	1770	1550	1390	1250	1140	1050	970	910	840
75x50x1.6RHS	3.01	2950	2560	2200	1720	1310	1140	980	840	730	640			
75x25x2.5RHS	3.60	2890	2490	2140	1850	1550	1360	1210	1090	990	910	840	790	730
75x25x2.0RHS	2.93	2750	2340	1990	1720	1310	1150	1020	920	840	770	710	660	610
75x25x1.6RHS	2.38	2580	2180	1850	1470	1110	960	820	710	610				
65x35x4.0RHS	5.35	2980	2610	2250	1960	1720	1610	1520	1390	1270	1170	1080	1010	940
65x35x3.0RHS	4.25	2880	2480	2120	1840	1610	1460	1310	1180	1080	990	910	850	800
65x35x2.5RHS	3.60	2770	2350	2010	1740	1470	1290	1150	1030	940	860	800	740	690
65x35x2.0RHS	2.93	2610	2200	1870	1610	1250	1090	970	870	790	730	670	620	
50x25x3.0RHS	3.07	2130	1740	1450	1240	970	840	750	670	610				
50x25x2.5RHS	2.62	2040	1660	1380	1150	860	740	660						
50x25x2.0RHS	2.15	1930	1560	1290	990	730	630							
50x25x1.6RHS	1.75	1810	1450	1190	840	610								
50x20x3.0RHS	2.83	2010	1640	1360	1150	860	750	660	600					
50x20x2.5RHS	2.42	1930	1560	1290	1040	770	660							
50x20x2.0RHS	1.99	1830	1470	1210	890	650								
50x20x1.6RHS	1.63	1720	1370	1080	750									

* Girder placed anywhere along the Lintel with maximum Girder station as shown on page 13

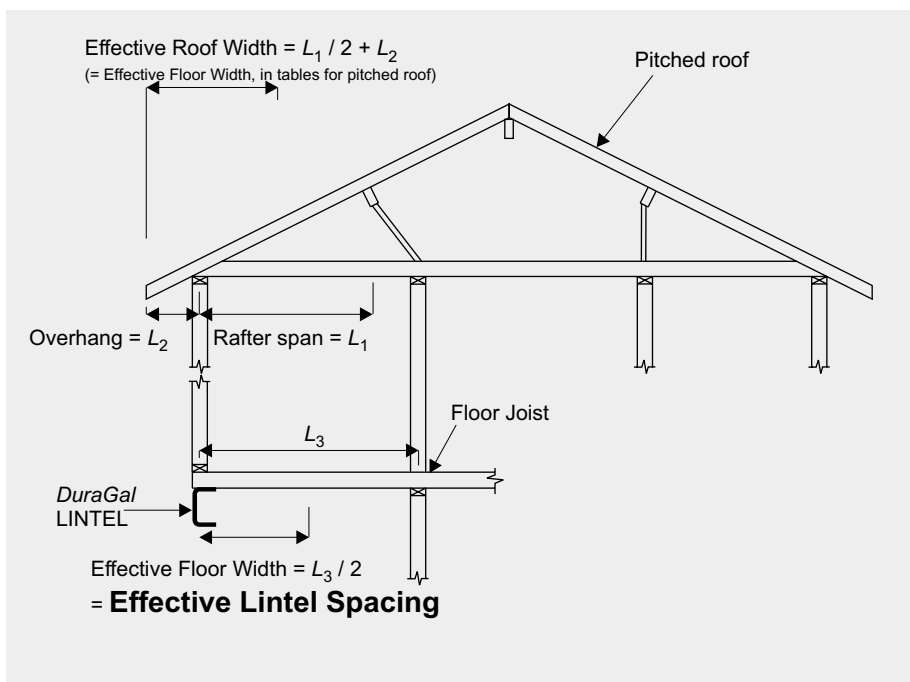
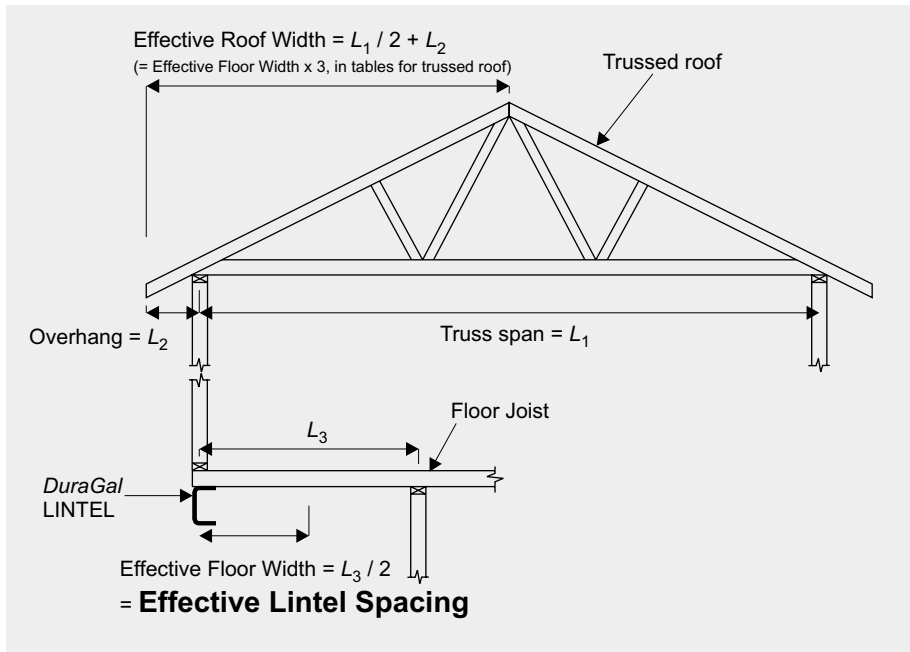
LINTEL SUPPORTING ROOF AND FLOOR LOADS

Applied loads and deflection limits used to generate the tables on pages 18 to 25.

	LOAD (kPa)		DEFLECTION (mm)	
	Dead Load (G)	Live Load (Q)	Dead Load (G)	Live Load (Q)
FLOORING				
Timber Floor and Timber walls	0.9	1.5	Span / 300 to 9mm	Span / 200 to 10mm
Concrete Floor* and Timber Walls	3.4			
ROOFING				
Masonry Tiles and Ceiling	0.9			
Steel Sheeting and Ceiling	0.4			

* Maximum concrete floor thickness assumed to be 125mm

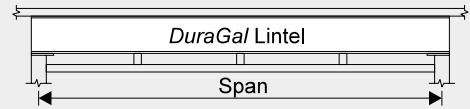
LINTEL SUPPORTING ROOF AND FLOOR LOADS



FLOOR - Timber
ROOF - Masonry Tiles & Ceiling - Pitched Roof*

Maximum Lintel Span (mm)

SINGLE SPAN



Effective Lintel Spacing (mm)

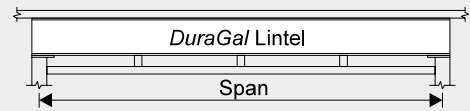
DuraGal® Section	Mass kg/m	1200	1800	2400	3000	3600	4200	4800
300x90x8.0CC	28.5	7070	6450	6040	5730	5480	5280	5110
300x90x7.0CC	25.1	6850	6240	5840	5540	5300	5100	4940
300x90x6.0CC	21.6	6570	5980	5590	5300	5070	4880	4450
250x90x6.0CC	19.2	5900	5360	5010	4750	4540	4380	4230
230x75x6.0CC	16.9	5500	5000	4670	4420	4230	4070	3940
200x75x6.0CC	15.5	5060	4600	4290	4070	3890	3750	3620
200x75x5.0CC	12.4	4750	4310	4020	3810	3640	3420	3000
180x75x5.0CC	11.6	4460	4050	3770	3570	3420	3290	3010
150x75x5.0CC	10.5	4010	3630	3390	3210	3070	2950	2810
125x65x4.0CC	7.23	3340	3020	2820	2660	2440	2260	2030
100x50x4.0CC	5.59	2840	2520	2300	2130	2000	1850	1740
75x40x4.0CC	4.25	2200	1920	1750	1630	1530	1440	1350
150x50x6.0RHS	16.7	4170	3790	3530	3350	3200	3080	2990
150x50x5.0RHS	14.2	4040	3670	3430	3240	3100	2990	2890
150x50x4.0RHS	11.6	3880	3520	3290	3110	2970	2860	2770
150x50x3.0RHS	8.96	3680	3340	3110	2940	2820	2710	2600
150x50x2.5RHS	7.53	3540	3210	2990	2830	2710	2570	2460
150x50x2.0RHS	6.07	3370	3050	2550	2040	1700	1460	1280
125x75x6.0RHS	16.7	3970	3610	3370	3190	3050	2940	2840
125x75x5.0RHS	14.2	3850	3490	3260	3090	2950	2840	2750
125x75x4.0RHS	11.6	3690	3350	3120	2960	2830	2720	2610
125x75x3.0RHS	8.96	3500	3170	2950	2800	2670	2530	2420
125x75x2.5RHS	7.53	3360	3050	2840	2680	2530	2400	2280
125x75x2.0RHS	6.07	3200	2900	2700	2430	2220	1930	1690
100x50x6.0RHS	12.0	3190	2900	2700	2510	2370	2250	2150
100x50x5.0RHS	10.3	3110	2820	2610	2420	2280	2170	2080
100x50x4.0RHS	8.49	3000	2720	2480	2300	2170	2060	1970
100x50x3.5RHS	7.53	2920	2630	2400	2230	2100	1990	1910
100x50x3.0RHS	6.60	2850	2550	2320	2150	2030	1930	1840
100x50x2.5RHS	5.56	2750	2420	2200	2050	1930	1830	1750
100x50x2.0RHS	4.50	2590	2270	2060	1920	1810	1720	1640
75x50x6.0RHS	9.67	2630	2310	2100	1950	1840	1750	1670
75x50x5.0RHS	8.35	2550	2240	2040	1890	1780	1690	1620
75x50x4.0RHS	6.92	2440	2140	1940	1810	1700	1620	1550
75x50x3.0RHS	5.42	2290	2010	1830	1700	1600	1520	1450
75x50x2.5RHS	4.58	2190	1910	1740	1620	1520	1450	1380
75x50x2.0RHS	3.72	2050	1800	1630	1520	1430	1360	1300
75x50x1.6RHS	3.01	1930	1680	1530	1410	1280	1190	1110
75x25x2.5RHS	3.60	1880	1650	1500	1390	1310	1240	1190
75x25x2.0RHS	2.93	1770	1550	1410	1310	1230	1170	1120
75x25x1.6RHS	2.38	1670	1460	1330	1230	1160	1080	1010
65x35x4.0RHS	5.35	1970	1720	1570	1460	1370	1300	1250
65x35x3.0RHS	4.25	1870	1640	1490	1380	1300	1240	1180
65x35x2.5RHS	3.60	1790	1560	1420	1320	1240	1180	1130
65x35x2.0RHS	2.93	1680	1470	1340	1240	1170	1110	1060
50x25x3.0RHS	3.07	1380	1200	1100	1020	960	910	870
50x25x2.5RHS	2.62	1320	1160	1050	980	920	870	840
50x25x2.0RHS	2.15	1250	1100	1000	930	870	830	790
50x25x1.6RHS	1.75	1180	1030	940	870	820	780	730
50x20x3.0RHS	2.83	1310	1140	1040	960	910	860	830
50x20x2.5RHS	2.42	1260	1100	1000	930	870	830	790
50x20x2.0RHS	1.99	1190	1040	950	880	830	790	750
50x20x1.6RHS	1.63	1130	990	900	830	780	730	690

* Pitched Roof - Effective Roof Width is assumed equal to Effective Floor Width

FLOOR - Timber
ROOF - Masonry Tiles & Ceiling - Trussed Roof*

Maximum Lintel Span (mm)

SINGLE SPAN



Effective Lintel Spacing (mm)

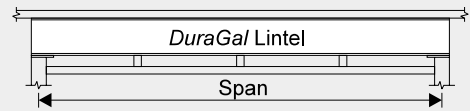
DuraGal® Section	Mass kg/m	1200	1800	2400	3000	3600	4200	4800
300x90x8.0CC	28.5	6040	5480	5110	4840	4630	4460	4320
300x90x7.0CC	25.1	5840	5300	4940	4680	4480	4310	4070
300x90x6.0CC	21.6	5590	5070	4730	4480	3960	3400	2980
250x90x6.0CC	19.2	5010	4540	4230	4010	3830	3440	3010
230x75x6.0CC	16.9	4670	4230	3940	3730	3570	3430	3030
200x75x6.0CC	15.5	4290	3890	3620	3430	3280	3160	3050
200x75x5.0CC	12.4	4020	3640	3390	3190	2660	2290	2000
180x75x5.0CC	11.6	3770	3420	3180	3010	2680	2300	2010
150x75x5.0CC	10.5	3390	3070	2860	2700	2550	2320	2030
125x65x4.0CC	7.23	2820	2500	2270	2110	1810	1550	1360
100x50x4.0CC	5.59	2300	2010	1830	1700	1600	1520	1370
75x40x4.0CC	4.25	1750	1530	1390	1290	1220	1160	1100
150x50x6.0RHS	16.7	3530	3200	2990	2830	2700	2570	2460
150x50x5.0RHS	14.2	3430	3100	2890	2740	2590	2460	2350
150x50x4.0RHS	11.6	3290	2970	2770	2600	2450	2320	2220
150x50x3.0RHS	8.96	3110	2820	2600	2410	2270	2160	2060
150x50x2.5RHS	7.53	2990	2710	2460	2290	2150	1920	1680
150x50x2.0RHS	6.07	2840	2270	1700	1360	1140	980	850
125x75x6.0RHS	16.7	3370	3050	2840	2690	2530	2410	2300
125x75x5.0RHS	14.2	3260	2950	2750	2570	2420	2300	2200
125x75x4.0RHS	11.6	3120	2830	2610	2430	2290	2170	2080
125x75x3.0RHS	8.96	2950	2670	2420	2250	2120	2010	1930
125x75x2.5RHS	7.53	2840	2530	2300	2130	2010	1910	1830
125x75x2.0RHS	6.07	2700	2360	2150	1800	1500	1290	1130
100x50x6.0RHS	12.0	2700	2370	2150	2000	1880	1790	1710
100x50x5.0RHS	10.3	2610	2280	2080	1930	1820	1730	1650
100x50x4.0RHS	8.49	2480	2170	1970	1830	1720	1640	1570
100x50x3.5RHS	7.53	2400	2100	1910	1770	1670	1580	1520
100x50x3.0RHS	6.60	2320	2030	1840	1710	1610	1530	1460
100x50x2.5RHS	5.56	2200	1930	1750	1630	1530	1450	1390
100x50x2.0RHS	4.50	2060	1810	1640	1520	1430	1360	1300
75x50x6.0RHS	9.67	2100	1840	1670	1550	1460	1390	1330
75x50x5.0RHS	8.35	2040	1780	1620	1510	1420	1350	1290
75x50x4.0RHS	6.92	1940	1700	1550	1440	1350	1290	1230
75x50x3.0RHS	5.42	1830	1600	1450	1350	1270	1210	1160
75x50x2.5RHS	4.58	1740	1520	1380	1290	1210	1150	1100
75x50x2.0RHS	3.72	1630	1430	1300	1210	1140	1080	1030
75x50x1.6RHS	3.01	1530	1340	1220	1130	1050	970	910
75x25x2.5RHS	3.60	1500	1310	1190	1100	1040	990	940
75x25x2.0RHS	2.93	1410	1230	1120	1040	980	930	890
75x25x1.6RHS	2.38	1330	1160	1050	980	920	870	830
65x35x4.0RHS	5.35	1570	1370	1250	1160	1090	1030	990
65x35x3.0RHS	4.25	1490	1300	1180	1100	1030	980	940
65x35x2.5RHS	3.60	1420	1240	1130	1050	990	940	900
65x35x2.0RHS	2.93	1340	1170	1060	990	930	880	850
50x25x3.0RHS	3.07	1100	960	870	810	760	720	690
50x25x2.5RHS	2.62	1050	920	840	780	730	690	660
50x25x2.0RHS	2.15	1000	870	790	730	690	660	630
50x25x1.6RHS	1.75	940	820	750	690	650	620	590
50x20x3.0RHS	2.83	1040	910	830	770	720	690	660
50x20x2.5RHS	2.42	1000	870	790	740	690	660	630
50x20x2.0RHS	1.99	950	830	750	700	660	630	600
50x20x1.6RHS	1.63	900	780	710	660	620	590	560

* Trussed Roof - Effective Roof Width is assumed equal to 3 times Effective Floor Width

FLOOR - Timber
ROOF - Steel Sheeting & Ceiling - Pitched Roof*

Maximum Lintel Span (mm)

SINGLE SPAN



Effective Lintel Spacing (mm)

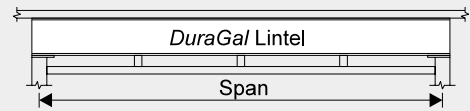
DuraGal® Section	Mass kg/m	1200	1800	2400	3000	3600	4200	4800
300x90x8.0CC	28.5	7590	6950	6510	6180	5920	5710	5530
300x90x7.0CC	25.1	7360	6730	6300	5980	5730	5520	5350
300x90x6.0CC	21.6	7070	6450	6040	5730	5480	5280	5110
250x90x6.0CC	19.2	6350	5790	5410	5130	4910	4730	4580
230x75x6.0CC	16.9	5930	5400	5040	4780	4570	4400	4260
200x75x6.0CC	15.5	5460	4970	4640	4400	4200	4040	3910
200x75x5.0CC	12.4	5120	4660	4350	4110	3930	3780	3470
180x75x5.0CC	11.6	4810	4370	4080	3860	3690	3550	3430
150x75x5.0CC	10.5	4330	3930	3660	3460	3310	3180	3030
125x65x4.0CC	7.23	3610	3270	3040	2870	2620	2430	2270
100x50x4.0CC	5.59	3070	2770	2560	2360	2160	2000	1870
75x40x4.0CC	4.25	2440	2140	1950	1810	1680	1550	1450
150x50x6.0RHS	16.7	4490	4090	3820	3620	3460	3330	3220
150x50x5.0RHS	14.2	4360	3970	3700	3510	3350	3230	3120
150x50x4.0RHS	11.6	4190	3810	3550	3360	3210	3090	2990
150x50x3.0RHS	8.96	3980	3610	3360	3180	3040	2920	2830
150x50x2.5RHS	7.53	3830	3470	3230	3050	2920	2810	2710
150x50x2.0RHS	6.07	3650	3300	2960	2370	1980	1700	1480
125x75x6.0RHS	16.7	4270	3890	3640	3450	3300	3170	3070
125x75x5.0RHS	14.2	4150	3770	3520	3340	3190	3070	2970
125x75x4.0RHS	11.6	3980	3620	3380	3200	3050	2940	2840
125x75x3.0RHS	8.96	3780	3430	3190	3020	2880	2770	2680
125x75x2.5RHS	7.53	3640	3290	3060	2900	2770	2620	2450
125x75x2.0RHS	6.07	3460	3130	2910	2620	2390	2220	1960
100x50x6.0RHS	12.0	3440	3130	2920	2760	2630	2500	2400
100x50x5.0RHS	10.3	3360	3050	2840	2690	2540	2410	2310
100x50x4.0RHS	8.49	3240	2940	2730	2560	2410	2290	2200
100x50x3.5RHS	7.53	3160	2860	2660	2480	2330	2220	2120
100x50x3.0RHS	6.60	3080	2790	2580	2400	2260	2140	2050
100x50x2.5RHS	5.56	2970	2680	2450	2280	2140	2040	1950
100x50x2.0RHS	4.50	2830	2530	2300	2140	2010	1900	1780
75x50x6.0RHS	9.67	2860	2560	2340	2170	2050	1950	1860
75x50x5.0RHS	8.35	2800	2490	2260	2110	1980	1890	1800
75x50x4.0RHS	6.92	2700	2380	2160	2010	1890	1800	1720
75x50x3.0RHS	5.42	2550	2230	2030	1890	1780	1690	1620
75x50x2.5RHS	4.58	2430	2130	1940	1800	1700	1610	1540
75x50x2.0RHS	3.72	2280	2000	1820	1690	1590	1510	1430
75x50x1.6RHS	3.01	2140	1880	1690	1510	1380	1280	1200
75x25x2.5RHS	3.60	2090	1830	1670	1550	1460	1390	1320
75x25x2.0RHS	2.93	1970	1730	1570	1460	1370	1280	1200
75x25x1.6RHS	2.38	1850	1620	1480	1370	1260	1160	1090
65x35x4.0RHS	5.35	2180	1920	1740	1620	1530	1450	1390
65x35x3.0RHS	4.25	2080	1820	1660	1540	1450	1380	1320
65x35x2.5RHS	3.60	1990	1740	1580	1470	1380	1320	1260
65x35x2.0RHS	2.93	1870	1640	1490	1390	1300	1240	1160
50x25x3.0RHS	3.07	1530	1340	1220	1130	1070	1010	970
50x25x2.5RHS	2.62	1470	1290	1170	1090	1020	970	930
50x25x2.0RHS	2.15	1400	1220	1110	1030	970	920	860
50x25x1.6RHS	1.75	1320	1150	1050	970	900	840	780
50x20x3.0RHS	2.83	1450	1270	1160	1070	1010	960	920
50x20x2.5RHS	2.42	1400	1220	1110	1030	970	920	880
50x20x2.0RHS	1.99	1330	1160	1060	980	920	870	810
50x20x1.6RHS	1.63	1250	1100	1000	930	850	790	740

* Pitched Roof - Effective Roof Width is assumed equal to Effective Floor Width

FLOOR - Timber
ROOF - Steel Sheetting & Ceiling - Trussed Roof*

Maximum Lintel Span (mm)

SINGLE SPAN



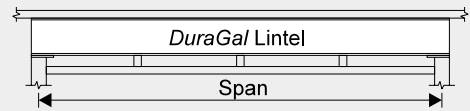
Effective Lintel Spacing (mm)

DuraGal® Section	Mass kg/m	1200	1800	2400	3000	3600	4200	4800
300x90x8.0CC	28.5	6830	6230	5820	5520	5280	5090	4930
300x90x7.0CC	25.1	6620	6020	5630	5330	5100	4920	4760
300x90x6.0CC	21.6	6340	5770	5390	5110	4880	4690	4110
250x90x6.0CC	19.2	5690	5170	4830	4570	4380	4210	4080
230x75x6.0CC	16.9	5300	4820	4500	4260	4070	3920	3800
200x75x6.0CC	15.5	4880	4430	4130	3920	3750	3610	3490
200x75x5.0CC	12.4	4580	4150	3870	3660	3500	3160	2770
180x75x5.0CC	11.6	4300	3900	3630	3440	3290	3170	2780
150x75x5.0CC	10.5	3860	3500	3260	3090	2950	2840	2700
125x65x4.0CC	7.23	3210	2910	2710	2520	2340	2140	1880
100x50x4.0CC	5.59	2730	2400	2180	2030	1910	1780	1670
75x40x4.0CC	4.25	2090	1830	1660	1540	1450	1380	1300
150x50x6.0RHS	16.7	4020	3650	3400	3230	3080	2970	2870
150x50x5.0RHS	14.2	3900	3540	3300	3120	2990	2880	2780
150x50x4.0RHS	11.6	3740	3390	3160	3000	2860	2760	2660
150x50x3.0RHS	8.96	3550	3210	3000	2840	2710	2580	2470
150x50x2.5RHS	7.53	3410	3090	2880	2720	2570	2450	2330
150x50x2.0RHS	6.07	3250	2940	2350	1890	1570	1350	1180
125x75x6.0RHS	16.7	3830	3480	3240	3070	2940	2830	2740
125x75x5.0RHS	14.2	3710	3370	3140	2970	2840	2740	2630
125x75x4.0RHS	11.6	3560	3230	3010	2850	2720	2600	2480
125x75x3.0RHS	8.96	3370	3050	2840	2690	2530	2410	2300
125x75x2.5RHS	7.53	3240	2930	2730	2550	2400	2280	2180
125x75x2.0RHS	6.07	3080	2790	2570	2340	2080	1780	1560
100x50x6.0RHS	12.0	3080	2790	2570	2390	2250	2140	2050
100x50x5.0RHS	10.3	3000	2720	2480	2300	2170	2060	1970
100x50x4.0RHS	8.49	2890	2590	2350	2190	2060	1960	1870
100x50x3.5RHS	7.53	2820	2500	2280	2120	1990	1890	1810
100x50x3.0RHS	6.60	2750	2420	2200	2050	1930	1830	1750
100x50x2.5RHS	5.56	2630	2300	2090	1940	1830	1740	1660
100x50x2.0RHS	4.50	2460	2160	1960	1820	1720	1630	1560
75x50x6.0RHS	9.67	2500	2190	2000	1860	1750	1660	1590
75x50x5.0RHS	8.35	2430	2130	1940	1800	1690	1610	1540
75x50x4.0RHS	6.92	2320	2030	1850	1720	1620	1540	1470
75x50x3.0RHS	5.42	2180	1910	1740	1610	1520	1440	1380
75x50x2.5RHS	4.58	2080	1820	1650	1540	1450	1370	1310
75x50x2.0RHS	3.72	1950	1710	1550	1440	1360	1290	1230
75x50x1.6RHS	3.01	1830	1600	1460	1350	1230	1140	1070
75x25x2.5RHS	3.60	1790	1560	1420	1320	1240	1180	1130
75x25x2.0RHS	2.93	1690	1470	1340	1240	1170	1110	1060
75x25x1.6RHS	2.38	1580	1380	1260	1170	1100	1040	970
65x35x4.0RHS	5.35	1870	1640	1490	1380	1300	1240	1180
65x35x3.0RHS	4.25	1780	1560	1410	1310	1240	1180	1120
65x35x2.5RHS	3.60	1700	1490	1350	1250	1180	1120	1070
65x35x2.0RHS	2.93	1600	1400	1270	1180	1110	1060	1010
50x25x3.0RHS	3.07	1310	1150	1040	970	910	860	830
50x25x2.5RHS	2.62	1260	1100	1000	930	870	830	790
50x25x2.0RHS	2.15	1190	1040	950	880	830	790	750
50x25x1.6RHS	1.75	1120	980	890	830	780	740	700
50x20x3.0RHS	2.83	1240	1090	990	920	860	820	780
50x20x2.5RHS	2.42	1190	1040	950	880	830	790	750
50x20x2.0RHS	1.99	1130	990	900	840	790	750	720
50x20x1.6RHS	1.63	1070	940	850	790	740	700	660

* Trussed Roof - Effective Roof Width is assumed equal to 3 times Effective Floor Width

**FLOOR - Concrete (max. floor thickness 125mm)
ROOF - Masonry Tiles & Ceiling - Pitched Roof***

Maximum Lintel Span (mm)



SINGLE SPAN

Effective Lintel Spacing (mm)

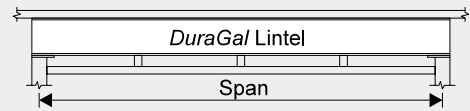
DuraGal® Section	Mass kg/m	1200	1800	2400	3000	3600	4200	4800
300x90x8.0CC	28.5	5790	5250	4900	4640	4440	4270	4130
300x90x7.0CC	25.1	5600	5080	4730	4480	4280	4120	3610
300x90x6.0CC	21.6	5360	4860	4530	4200	3510	3010	2640
250x90x6.0CC	19.2	4800	4350	4050	3840	3550	3050	2670
230x75x6.0CC	16.9	4470	4050	3770	3570	3410	3060	2680
200x75x6.0CC	15.5	4110	3720	3470	3280	3140	3020	2700
200x75x5.0CC	12.4	3850	3480	3240	2830	2360	2030	1770
180x75x5.0CC	11.6	3610	3270	3050	2850	2370	2040	1780
150x75x5.0CC	10.5	3240	2940	2730	2550	2400	2050	1800
125x65x4.0CC	7.23	2700	2360	2140	1920	1600	1370	1200
100x50x4.0CC	5.59	2170	1890	1720	1600	1510	1390	1210
75x40x4.0CC	4.25	1650	1440	1310	1220	1150	1090	1040
150x50x6.0RHS	16.7	3390	3070	2860	2700	2550	2420	2320
150x50x5.0RHS	14.2	3280	2970	2770	2590	2440	2320	2220
150x50x4.0RHS	11.6	3150	2850	2640	2450	2310	2190	2100
150x50x3.0RHS	8.96	2980	2690	2450	2270	2140	2030	1950
150x50x2.5RHS	7.53	2860	2550	2320	2160	1980	1700	1490
150x50x2.0RHS	6.07	2720	2010	1510	1210	1010	860	760
125x75x6.0RHS	16.7	3220	2920	2720	2540	2390	2270	2170
125x75x5.0RHS	14.2	3120	2830	2610	2430	2290	2170	2080
125x75x4.0RHS	11.6	2990	2710	2470	2290	2160	2050	1960
125x75x3.0RHS	8.96	2830	2510	2290	2120	2000	1900	1820
125x75x2.5RHS	7.53	2720	2380	2170	2010	1890	1800	1720
125x75x2.0RHS	6.07	2550	2230	1990	1590	1330	1140	1000
100x50x6.0RHS	12.0	2550	2230	2030	1890	1780	1690	1620
100x50x5.0RHS	10.3	2460	2150	1960	1820	1710	1630	1560
100x50x4.0RHS	8.49	2340	2050	1860	1730	1630	1540	1480
100x50x3.5RHS	7.53	2260	1980	1800	1670	1570	1490	1430
100x50x3.0RHS	6.60	2190	1910	1740	1610	1520	1440	1380
100x50x2.5RHS	5.56	2080	1820	1650	1530	1440	1370	1310
100x50x2.0RHS	4.50	1950	1700	1550	1440	1350	1280	1230
75x50x6.0RHS	9.67	1980	1740	1580	1470	1380	1310	1250
75x50x5.0RHS	8.35	1920	1680	1530	1420	1340	1270	1220
75x50x4.0RHS	6.92	1830	1600	1460	1350	1280	1210	1160
75x50x3.0RHS	5.42	1720	1510	1370	1270	1200	1140	1090
75x50x2.5RHS	4.58	1640	1440	1300	1210	1140	1080	1040
75x50x2.0RHS	3.72	1540	1350	1220	1140	1070	1020	970
75x50x1.6RHS	3.01	1440	1260	1150	1070	990	910	850
75x25x2.5RHS	3.60	1410	1230	1120	1040	980	930	890
75x25x2.0RHS	2.93	1330	1160	1060	980	920	880	840
75x25x1.6RHS	2.38	1250	1090	990	920	870	820	780
65x35x4.0RHS	5.35	1480	1290	1170	1090	1030	980	930
65x35x3.0RHS	4.25	1400	1230	1120	1040	980	930	890
65x35x2.5RHS	3.60	1340	1170	1070	990	930	880	850
65x35x2.0RHS	2.93	1260	1100	1000	930	880	830	800
50x25x3.0RHS	3.07	1030	900	820	760	720	680	650
50x25x2.5RHS	2.62	990	870	790	730	690	650	630
50x25x2.0RHS	2.15	940	820	750	690	650	620	590
50x25x1.6RHS	1.75	890	770	700	650	610	580	560
50x20x3.0RHS	2.83	980	860	780	720	680	650	620
50x20x2.5RHS	2.42	940	820	750	700	650	620	590
50x20x2.0RHS	1.99	890	780	710	660	620	590	560
50x20x1.6RHS	1.63	840	740	670	620	590	560	530

* Pitched Roof - Effective Roof Width is assumed equal to Effective Floor Width

FLOOR - Concrete (max. floor thickness 125mm)
ROOF - Masonry Tiles & Ceiling - Trussed Roof*

Maximum Lintel Span (mm)

SINGLE SPAN



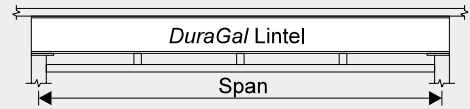
Effective Lintel Spacing (mm)

DuraGal® Section	Mass kg/m	1200	1800	2400	3000	3600	4200	4800
300x90x8.0CC	28.5	5320	4830	4500	4260	4070	3920	3710
300x90x7.0CC	25.1	5140	4660	4340	4110	3710	3190	2790
300x90x6.0CC	21.6	4920	4460	4060	3250	2710	2330	2040
250x90x6.0CC	19.2	4410	3990	3720	3290	2750	2360	2060
230x75x6.0CC	16.9	4110	3720	3460	3280	2760	2370	2070
200x75x6.0CC	15.5	3770	3420	3180	3010	2780	2380	2090
200x75x5.0CC	12.4	3530	3200	2730	2190	1830	1570	1370
180x75x5.0CC	11.6	3320	3000	2750	2200	1840	1570	1380
150x75x5.0CC	10.5	2980	2690	2450	2220	1850	1590	1390
125x65x4.0CC	7.23	2400	2100	1850	1480	1240	1060	930
100x50x4.0CC	5.59	1930	1690	1530	1420	1250	1070	940
75x40x4.0CC	4.25	1470	1280	1170	1080	1020	970	910
150x50x6.0RHS	16.7	3110	2810	2600	2410	2270	2160	2060
150x50x5.0RHS	14.2	3010	2730	2490	2310	2180	2070	1980
150x50x4.0RHS	11.6	2890	2580	2350	2180	2050	1950	1870
150x50x3.0RHS	8.96	2730	2400	2180	2030	1910	1810	1730
150x50x2.5RHS	7.53	2600	2270	2070	1840	1530	1310	1150
150x50x2.0RHS	6.07	2320	1550	1170	930	780	670	580
125x75x6.0RHS	16.7	2960	2670	2430	2260	2130	2020	1930
125x75x5.0RHS	14.2	2870	2560	2330	2160	2040	1930	1850
125x75x4.0RHS	11.6	2750	2420	2200	2040	1920	1820	1750
125x75x3.0RHS	8.96	2560	2240	2040	1890	1780	1690	1620
125x75x2.5RHS	7.53	2430	2120	1930	1790	1690	1600	1510
125x75x2.0RHS	6.07	2270	1980	1540	1230	1030	880	770
100x50x6.0RHS	12.0	2270	1990	1810	1680	1580	1500	1440
100x50x5.0RHS	10.3	2190	1920	1740	1620	1520	1450	1390
100x50x4.0RHS	8.49	2080	1820	1660	1540	1450	1380	1320
100x50x3.5RHS	7.53	2010	1760	1600	1490	1400	1330	1270
100x50x3.0RHS	6.60	1950	1700	1550	1440	1350	1290	1230
100x50x2.5RHS	5.56	1850	1620	1470	1370	1280	1220	1170
100x50x2.0RHS	4.50	1730	1520	1380	1280	1200	1140	1090
75x50x6.0RHS	9.67	1770	1550	1410	1310	1230	1170	1120
75x50x5.0RHS	8.35	1710	1500	1360	1260	1190	1130	1080
75x50x4.0RHS	6.92	1630	1430	1300	1210	1140	1080	1030
75x50x3.0RHS	5.42	1540	1340	1220	1130	1070	1010	970
75x50x2.5RHS	4.58	1460	1280	1160	1080	1020	960	920
75x50x2.0RHS	3.72	1370	1200	1090	1010	950	910	870
75x50x1.6RHS	3.01	1290	1120	1020	950	870	800	750
75x25x2.5RHS	3.60	1260	1100	1000	930	870	830	790
75x25x2.0RHS	2.93	1180	1030	940	870	820	780	750
75x25x1.6RHS	2.38	1110	970	880	820	770	730	680
65x35x4.0RHS	5.35	1320	1150	1050	970	910	870	830
65x35x3.0RHS	4.25	1250	1090	990	920	870	820	790
65x35x2.5RHS	3.60	1190	1040	950	880	830	790	750
65x35x2.0RHS	2.93	1120	980	890	830	780	740	710
50x25x3.0RHS	3.07	920	800	730	680	640	610	580
50x25x2.5RHS	2.62	880	770	700	650	610	580	560
50x25x2.0RHS	2.15	840	730	660	620	580	550	530
50x25x1.6RHS	1.75	790	690	630	580	550	520	490
50x20x3.0RHS	2.83	870	760	690	640	610	570	550
50x20x2.5RHS	2.42	840	730	670	620	580	550	530
50x20x2.0RHS	1.99	800	700	630	590	550	520	500
50x20x1.6RHS	1.63	750	660	600	550	520	500	460

* Trussed Roof - Effective Roof Width is assumed equal to 3 times Effective Floor Width

**FLOOR - Concrete (max. floor thickness 125mm)
ROOF - Steel Sheeting & Ceiling - Pitched Roof***

Maximum Lintel Span (mm)



SINGLE SPAN

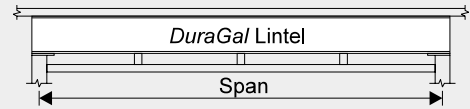
Effective Lintel Spacing (mm)

DuraGal [®] Section	Mass kg/m	1200	1800	2400	3000	3600	4200	4800
300x90x8.0CC	28.5	5960	5410	5050	4780	4570	4400	4260
300x90x7.0CC	25.1	5760	5230	4880	4620	4420	4250	3930
300x90x6.0CC	21.6	5520	5000	4670	4420	3820	3280	2870
250x90x6.0CC	19.2	4950	4480	4180	3960	3780	3320	2900
230x75x6.0CC	16.9	4610	4170	3890	3680	3520	3330	2920
200x75x6.0CC	15.5	4240	3840	3580	3390	3240	3120	2940
200x75x5.0CC	12.4	3970	3590	3350	3080	2570	2200	1930
180x75x5.0CC	11.6	3720	3370	3140	2970	2590	2220	1940
150x75x5.0CC	10.5	3340	3030	2820	2660	2500	2240	1960
125x65x4.0CC	7.23	2780	2460	2230	2070	1740	1500	1310
100x50x4.0CC	5.59	2260	1970	1790	1670	1570	1490	1320
75x40x4.0CC	4.25	1720	1500	1370	1270	1190	1130	1080
150x50x6.0RHS	16.7	3490	3160	2950	2790	2650	2520	2410
150x50x5.0RHS	14.2	3380	3060	2850	2700	2540	2420	2310
150x50x4.0RHS	11.6	3240	2940	2730	2550	2400	2280	2180
150x50x3.0RHS	8.96	3070	2780	2550	2370	2230	2120	2030
150x50x2.5RHS	7.53	2950	2660	2420	2250	2110	1850	1620
150x50x2.0RHS	6.07	2810	2190	1640	1320	1100	940	820
125x75x6.0RHS	16.7	3320	3010	2810	2640	2490	2360	2260
125x75x5.0RHS	14.2	3220	2910	2720	2530	2380	2260	2160
125x75x4.0RHS	11.6	3080	2790	2570	2390	2250	2130	2040
125x75x3.0RHS	8.96	2920	2620	2380	2210	2080	1980	1890
125x75x2.5RHS	7.53	2800	2480	2260	2100	1970	1880	1790
125x75x2.0RHS	6.07	2650	2320	2110	1740	1450	1240	1090
100x50x6.0RHS	12.0	2650	2330	2120	1970	1850	1760	1680
100x50x5.0RHS	10.3	2560	2240	2040	1890	1780	1700	1620
100x50x4.0RHS	8.49	2430	2130	1940	1800	1690	1610	1540
100x50x3.5RHS	7.53	2350	2060	1870	1740	1640	1560	1490
100x50x3.0RHS	6.60	2280	1990	1810	1680	1580	1500	1440
100x50x2.5RHS	5.56	2160	1890	1720	1600	1500	1430	1370
100x50x2.0RHS	4.50	2030	1770	1610	1500	1410	1340	1280
75x50x6.0RHS	9.67	2060	1810	1640	1530	1440	1370	1310
75x50x5.0RHS	8.35	2000	1750	1590	1480	1390	1320	1270
75x50x4.0RHS	6.92	1910	1670	1520	1410	1330	1260	1210
75x50x3.0RHS	5.42	1800	1570	1430	1330	1250	1190	1130
75x50x2.5RHS	4.58	1710	1500	1360	1260	1190	1130	1080
75x50x2.0RHS	3.72	1610	1400	1280	1180	1120	1060	1010
75x50x1.6RHS	3.01	1500	1320	1200	1110	1030	950	890
75x25x2.5RHS	3.60	1470	1290	1170	1080	1020	970	930
75x25x2.0RHS	2.93	1390	1210	1100	1020	960	910	870
75x25x1.6RHS	2.38	1300	1140	1030	960	900	860	810
65x35x4.0RHS	5.35	1540	1350	1220	1140	1070	1020	970
65x35x3.0RHS	4.25	1460	1280	1160	1080	1020	970	920
65x35x2.5RHS	3.60	1400	1220	1110	1030	970	920	880
65x35x2.0RHS	2.93	1320	1150	1050	970	910	870	830
50x25x3.0RHS	3.07	1080	940	860	790	750	710	680
50x25x2.5RHS	2.62	1030	900	820	760	720	680	650
50x25x2.0RHS	2.15	980	860	780	720	680	650	620
50x25x1.6RHS	1.75	920	810	730	680	640	610	580
50x20x3.0RHS	2.83	1020	890	810	750	710	670	640
50x20x2.5RHS	2.42	980	860	780	720	680	650	620
50x20x2.0RHS	1.99	930	810	740	690	650	610	590
50x20x1.6RHS	1.63	880	770	700	650	610	580	550

* Pitched Roof - Effective Roof Width is assumed equal to Effective Floor Width

**FLOOR - Concrete (max. floor thickness 125mm)
ROOF - Steel Sheetting & Ceiling - Trussed Roof***

Maximum Lintel Span (mm)



SINGLE SPAN

Effective Lintel Spacing (mm)

DuraGal® Section	Mass kg/m	1200	1800	2400	3000	3600	4200	4800
300x90x8.0CC	28.5	5700	5170	4820	4560	4360	4200	4060
300x90x7.0CC	25.1	5510	4990	4660	4410	4210	3930	3440
300x90x6.0CC	21.6	5270	4780	4450	4010	3340	2870	2510
250x90x6.0CC	19.2	4720	4280	3990	3770	3380	2900	2540
230x75x6.0CC	16.9	4400	3980	3710	3510	3360	2920	2550
200x75x6.0CC	15.5	4040	3660	3410	3230	3090	2940	2570
200x75x5.0CC	12.4	3780	3430	3190	2700	2250	1930	1690
180x75x5.0CC	11.6	3550	3220	3000	2710	2260	1940	1700
150x75x5.0CC	10.5	3190	2890	2690	2490	2280	1960	1710
125x65x4.0CC	7.23	2640	2310	2100	1830	1530	1310	1150
100x50x4.0CC	5.59	2120	1850	1680	1560	1470	1320	1160
75x40x4.0CC	4.25	1610	1410	1280	1190	1120	1060	1010
150x50x6.0RHS	16.7	3330	3020	2810	2650	2490	2370	2270
150x50x5.0RHS	14.2	3230	2920	2720	2540	2390	2270	2170
150x50x4.0RHS	11.6	3090	2800	2580	2400	2260	2140	2050
150x50x3.0RHS	8.96	2930	2630	2390	2220	2090	1990	1900
150x50x2.5RHS	7.53	2810	2500	2270	2110	1890	1620	1420
150x50x2.0RHS	6.07	2670	1920	1440	1150	960	820	720
125x75x6.0RHS	16.7	3170	2870	2670	2480	2340	2220	2120
125x75x5.0RHS	14.2	3070	2780	2550	2370	2230	2120	2030
125x75x4.0RHS	11.6	2940	2650	2410	2240	2110	2000	1920
125x75x3.0RHS	8.96	2780	2460	2240	2080	1950	1860	1780
125x75x2.5RHS	7.53	2660	2330	2120	1970	1850	1760	1680
125x75x2.0RHS	6.07	2490	2180	1900	1520	1270	1090	950
100x50x6.0RHS	12.0	2490	2180	1990	1850	1740	1650	1580
100x50x5.0RHS	10.3	2410	2110	1910	1780	1670	1590	1520
100x50x4.0RHS	8.49	2290	2000	1820	1690	1590	1510	1450
100x50x3.5RHS	7.53	2210	1930	1760	1630	1540	1460	1400
100x50x3.0RHS	6.60	2140	1870	1700	1580	1490	1410	1350
100x50x2.5RHS	5.56	2030	1780	1610	1500	1410	1340	1280
100x50x2.0RHS	4.50	1900	1660	1510	1400	1320	1260	1200
75x50x6.0RHS	9.67	1940	1700	1540	1430	1350	1280	1230
75x50x5.0RHS	8.35	1880	1640	1500	1390	1310	1240	1190
75x50x4.0RHS	6.92	1790	1570	1430	1330	1250	1180	1130
75x50x3.0RHS	5.42	1690	1470	1340	1240	1170	1110	1060
75x50x2.5RHS	4.58	1610	1400	1280	1180	1110	1060	1010
75x50x2.0RHS	3.72	1510	1320	1200	1110	1050	990	950
75x50x1.6RHS	3.01	1410	1230	1120	1040	960	890	830
75x25x2.5RHS	3.60	1380	1210	1100	1020	960	910	870
75x25x2.0RHS	2.93	1300	1140	1030	960	900	860	820
75x25x1.6RHS	2.38	1220	1070	970	900	850	810	760
65x35x4.0RHS	5.35	1440	1260	1150	1070	1000	950	910
65x35x3.0RHS	4.25	1370	1200	1090	1010	950	910	870
65x35x2.5RHS	3.60	1310	1150	1040	970	910	860	830
65x35x2.0RHS	2.93	1230	1080	980	910	860	810	780
50x25x3.0RHS	3.07	1010	880	800	750	700	670	640
50x25x2.5RHS	2.62	970	850	770	720	670	640	610
50x25x2.0RHS	2.15	920	800	730	680	640	610	580
50x25x1.6RHS	1.75	870	760	690	640	600	570	550
50x20x3.0RHS	2.83	960	840	760	710	660	630	600
50x20x2.5RHS	2.42	920	810	730	680	640	610	580
50x20x2.0RHS	1.99	870	760	690	640	610	580	550
50x20x1.6RHS	1.63	830	720	660	610	570	540	510

* Trussed Roof - Effective Roof Width is assumed equal to 3 times Effective Floor Width

